

Member Directory 2022



Celebrating Who We Are . . .



Centralia - Chehalis



Chamber of Commerce



LOWER SALES TAX THAN,
Seattle, Tacoma, Puyallup, and Olympia
= Savings in the \$100s to \$1000s

Visit one of our 6 locations today for sales and service.

We service ALL MAKES
and ALL MODELS!



Jeep®

DODGE



RAM

**WINNEBAGO**

BUICK



2018 Business of the Year



BE BOLD. BE KIND. BE AWESOME.™



**Call
today!**

Publisher
The Silver Agency

Advertising Sales Executive
Coralee Taylor

**Advertising &
Marketing Consultant**
Kyle McKerricher
Franklin Taylor

Contributors
Centralia-Chehalis
Chamber of Commerce

*The Centralia-Chehalis Annual
Directory and Chamber Profile was
produced by The Silver Agency for
the Centralia-Chehalis Chamber of
Commerce.*

*Every effort has been made to ensure
the accuracy of the information
contained in the Centralia-Chehalis
Annual Directory and Chamber
Profile. Neither the Centralia-Chehalis
Chamber of Commerce nor The Silver
Agency assume any responsibility for
errors or omissions.*

*Please contact the Centralia-Chehalis
Chamber of Commerce if you wish to
correct or change your membership
data. All material supplied for the
Centralia-Chehalis Chamber of
Commerce Annual Directory and
Chamber Profile becomes the property
of The Silver Agency and the Centralia-
Chehalis Chamber of Commerce.*

*No part of this publication may be
reproduced without permission from
The Silver Agency and/or Centralia-
Chehalis Chamber of Commerce.*

**Centralia-Chehalis
Chamber of Commerce**
500 NW Chamber of
Commerce Way
Chehalis, WA 98532
O 360-748-8885
F 360-748-8763

The Silver Agency
122 S Market Blvd,
Chehalis, WA 98532
360-736-8065 | silveragency.com

*Copyright © 2022 The Silver Agency.
All Rights Reserved.*

Visit our website at
chamberway.com

AHOY!

**It's smooth sailing with
our Business Fiber
Internet Service!**


RAINIERconnect
Your *Local* Choice for Business Internet & Phone

360.623.1494 • RainierConnect.com

Table of Contents

	2	Board of Directors
	3	Benefits of Being a Member
	4	Ambassadors & Ambassador's Benefits
	6	Community Development
	9	Economic Development
	10	Timeline
	12	Transportation / Libraries
	14	Education
	18	History
	19	Health / Medical / Wellness
	20	Geography / Climate
	21	Senior Living
	22	Employment / Important Phone Numbers
	23	Community Profile
	26	Calendar of Events
	27	2021 Business of the year
	28	2022 Sponsor Highlights
	33	Yellow Pages

Rob Fuller Scholarship



Each year, the Centralia-Chehalis Chamber of Commerce awards at least one scholarship to a local high school student. Criteria include grades, awards, community involvement, and a connection to the Chamber. In 2011, The Chamber dedicated the scholarship to the late Rob Fuller, a beloved philanthropist, business owner, and long-time community leader. Their hope is that their scholarship recipients will go on to have a legacy like Rob Fuller left behind in Chehalis, Centralia, and all of Lewis County. The Chamber awards the Rob Fuller Scholarship every year at the Chamber Forum in May.

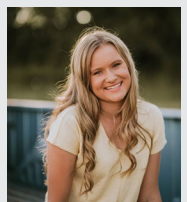


Olivia Mitchell Scholarship



In 2014, a lovely young lady who was a senior at Adna high school passed away in her sleep from a heart defect. The Chamber board decided to create a scholarship in Olivia's name for an Adna student that resonated with the spunky spirited and very loving personality of Olivia. One scholarship with a minimum of \$500 will be awarded.

Paige Wagner
2021 RECIPIENT



HOME CARPET WAREHOUSE

AND
CABINETS

**HUGE SELECTION.
GREAT SERVICE.
BEST PRICES.**

**6 MONTHS SAME
AS CASH O.A.C.**



**CALL TODAY
FREE ESTIMATES
(360)748-1650**

GRANITE • TILE • PERGO • VINYL • CARPET • AREA RUGS • CABINETS • WATERPROOF FLOORING

Beverage, Coffee, and Food Supply Made Easy

We offer reliable beverage, coffee, and food distribution services to the local community.
We have a diverse catalog of products to choose from and signing up for a plan is easy.
Visit our website for more information, OlympiaPepsi.com or call 360-357- 3812



- We offer beverage and food vending service!
- We take care of everything including installation, stocking and servicing.
- Call us to learn more about our vending services!

Quenching Thirst Since 1945

L&E Bottling Company

www.OlympiaPepsi.com | 360-357-3812

We offer services in Thurston,
Lewis, & Mason Counties.



The Chamber Board

Executive Committee



Chair
Lindy Waring
KELA/KMNT Radio



Incoming Chair
Coralee Taylor
Silver Agency and
The Chronicle



Secretary
Julie Pendleton
Dicks Brewing Co.



Treasurer
Julie Shaffley
Good Health
Nutrition Center



At-Large Exec.
Matt Moses
Sierra Pacific Industries



Past Chair
Amanda Singleton
Rainier Connect

Board of Directors



Brenda Balmelli
Chehalis Livestock
Market



Stan Bowman
Chase Bank



Sandra Wing
Twin Cities Sports
Commission



Walter Cuestas
Century 21/Lund



Trent Hennings
Riverside Golf Club



Erin Hillier
Hillier, Scheibmeir, Kelly
& Satterfield, PS



Daryl Lund
Community Member



Jeff Malloy
O' Blarney's



Cameron McGee
Calypso



Chris Thomas
Providence Hospital



Rodney Youckton
Lucky Eagle Casino



Rob Hill
City of Centralia



Jill Anderson
City of Chehalis

NON-VOTING



Benefits of being a *Chamber Member*

Centralia Chehalis Chamber of Commerce provides businesses with access to resources, discounts, and relationships that enable them to save money, market their products, and/or streamline their processes. Whether your business is looking for B2B partners and sales, help with customer acquisition, or guidance on HR processes, we can help.

PROMOTE - INFORM - PROTECT

The opportunity to network among local business owners, operators, and industry movers is one of the most appealing aspects of joining a chapter chamber of commerce. Examples of a few include:

Networking Opportunities - Business After Hours, business lunches with speakers focused on business topics, events like the annual Home and Garden show, employment fairs, and ribbon cuttings to name a few.

New Business Opportunities: We provide business referrals, insights into new local businesses, and networking opportunities with industry leaders.

Marketing Outlets: We offer advertising opportunities on our website, chamber social media pages, and in our annual directory. Our Bizz Buzz articles are also

available for our members to inform the community about new happenings.

We advocate for a variety of issues, including tax policies, legal reform, and economic reform. This is accomplished using a two-pronged approach wherein we handle local and regional government-related issues, and our US Chamber of Commerce handles the national.

Business Credibility: According to a survey conducted by The Schapiro Group, customers responded 63% more likely to use the goods of businesses that belong to a local chamber.

For more information about becoming a chamber member, please call 360-748-8885. We would love to share the benefits about our chamber memberships.



Meet your 2022 Chamber Ambassadors

Alicia Blum
Security State Bank

Amber Taylor
Community Member

Christine Brower
Community Member

Corenne 'Cory' Moses
Adeline Coffman Guild

Dianne Dorey
Community Member

Franklin Taylor
Silver Agency

John Elmore
Community Member

Katie Blurton
Holiday Inn Express

Shane Wood
TwinStar Credit Union

Shari McFarland
Coldwell Banker Voetberg
Real Estate, Inc

Tuneesha Hankins
Best Western Inn & Suites

Benefits of being an Ambassador

- The opportunity to make valuable contacts with business leaders throughout the Lewis County Area.
- Recognition at Chamber events, Board meetings, and in our Chamber publications.
- Networking opportunities with representatives from a wide variety of businesses and organizations.
- Recognition among peers as a community leader, both individually and for the business or organization you represent.
- An opportunity to work "behind the scenes" on behalf of the Chamber at important events and activities that define the future of the Chehalis-Centralia area and surrounding regions.
- Learn more about the growth and economic development of the Chehalis-Centralia area.
- Personal fulfillment, plus the opportunity to meet new people and make new connections and friends.



Call us for a Ribbon Cutting 360-748-8885

Accounts, Services and Loans for your business

TwinStar Credit Union offers a full range of services for your business as well as loans to help your business grow.



Shane Wood
Business Services Manager
Commercial Lending Specialist
SWood@TwinStarCU.com

360.402.1332 / TwinStarCU.com/business

- Dividend earning business checking & savings accounts
- Digital check depositing
- Merchant Card Services
- Business online banking
- Payroll services
- Business Equipment and Vehicle Loans
- Commercial Real Estate Financing
- Business Lines of Credit
- Medical Practice Loans
- SBA 504 Loans



INSURED BY NCUA

Centralia:
1320 S Gold St

Centralia Safeway:
1129 Harrison Ave

Chehalis:
1555 S Market Blvd

Onalaska:
223 2nd St W



Personalized, Gentle Care
Dentistry for Adults and Children
New Patients and Emergencies Welcome



360-736-1114 • 1307 S Gold Street, Centralia • CentraliaDentist.com
Monday - Thursday 8 AM to 5 PM • Friday 8 AM to 1 PM

Welcome to Centralia



On January 8, 1875, George Washington, the son of an African American slave, filed a plot that established the town of Centerville, soon to be renamed Centralia. By 1920, Centralia became known as the Hub City because of its central location between Seattle and Portland.

Today, Centralia, with a population over 18,000, is still known as the Hub City – not just because of its location but because it's a hub for retail, commercial, industrial development, and sporting opportunities. Centralia is listed in the National Register of Historic Places, displaying a collection of brick commercial buildings constructed in the late 1800s and early 1900s as well as the totally restored 1910 Railroad Depot.

In 2003, the City completed a 12-block downtown restoration and streetscape project that is still breathing life into the downtown and reclaiming the historical charm, while transforming it into an economically vibrant place. The newly renovated Centralia Square and Grand Ballroom and Hotel returns visitors back to its grandeur in the 1920s. McMenamin's Olympic Club, Hotel and Theater invites visitors to step back in time and experience an early 1900s men's club and

hotel. Other downtown businesses include numerous antique shops, a glass-blowing studio and gallery, a colorful art shop, a winery, restaurants, coffee shops, specialty boutiques, furniture stores, bookstores, banquet and conference facilities, and high-end salons.

Centralia is also home to outlet stores (exit 82 on I-5) with 30 plus stores including the Nike Clearance Store, Eddie Bauer, Polo Ralph Lauren, Under Armour and Coach Factory, to name just a few. These stores offer discounted prices on popular merchandise. In addition, the "Miracle Mile" (south of the Historic Downtown District) offers a wide variety of businesses and restaurants.

In 2010, the City partnered with the Centralia School District and the Lewis County Public Facilities District to develop a sports complex that will bring visitors to the region. Today the complex at Borst Park has six full-size baseball fields (two lighted with one being a baseball stadium with seating for 570), two little league fields (one lighted), eight softball fields (four lighted), six tennis courts, four full size soccer fields, a turf football/soccer/ track stadium with seating for 3,500 people (lighted). The Sports Hub in Borst Park is a 99,000 sq. ft. indoor sports facility capable of hosting large basketball and volleyball tournaments and even softball games with an indoor turf field! Centralia also offers excellent schools, including Centralia College – the oldest continuously operating community college in the state of Washington. Learn more about Centralia at www.cityofcentralia.com.





Chehalis is a community where historic charm and character are preserved and cherished while welcoming the future. Downtown is thriving with historic buildings reborn with charming boutiques and delightful eateries, along with a host of business opportunities. The State Avenue Business District is home to many longstanding and locally owned establishments where you can find retailers and family-friendly restaurants conveniently located just off Interstate 5.

The City of Chehalis is located halfway between Seattle and Portland, making it an excellent choice for industrial, commercial, and residential growth. This prime location also provides easy access to the beauty of the Pacific Northwest, including the Willapa Trail, Mount St. Helens National Volcanic Monument, and Mount Rainier National Park.

Originally founded as Saundersville in 1852, the city's name was changed to Chehalis in 1870, an Indian word meaning "shifting and shining sand". Two years later, in 1872, Chehalis became the Lewis County seat and was incorporated on November 23, 1883. Our rich history is reflected in the design and architecture of both residential and commercial areas, with three historic districts that are recognized on the National Register of Historic Places. Exploring the 40+ historic buildings downtown is easy with the Historic Downtown Chehalis Walking Tour booklet, which features facts and stories that bring history to life. History buffs will also find a world class Veterans Memorial Museum, the Lewis County Historical Museum in Chehalis,

and the Chehalis-Centralia Railroad and Museum. The railroad offers dinner train rides as well as special event rides including: The Pumpkin Train, The Eggspress, and The Polar Express.

There are many outdoor activities available in Chehalis, including our newly renovated Recreation Park and the next generation Penny Playground. The Park highlights four new all-weather ballfields for softball tournaments throughout the year, and the Playground features ADA accessible play equipment that provides fun for kids of all abilities. More family fun is available at the city's Aquatic Center during hot summer days, and there is "Music in the Park" on those cool summer nights. Downtown shopping is always interesting at the Farmers Market from June to October, and the Santa Parade brings holiday excitement to everyone.

Living in Chehalis provides an opportunity to appreciate the best of history while investing in the future. With an outstanding school district, our students are being prepared to make our city even better in the years to come. Working in partnership with the city, the Chehalis Foundation and the Chehalis Community Renaissance Team are just two of the many non-profit organizations actively investing time and capital to support work that will promote economic vitality and a high quality of life now and in the future.

For more information about the City of Chehalis, please visit us at www.ci.chehalis.wa.us or call us at 360-345-1042. We would love to share more about Chehalis with you.

Lewis County's Premier Industrial Parks



- ▶ Fully entitled industrial sites from 1 to 100 acres
- ▶ Lease, build-to-suit & outright sale options
- ▶ Unlimited water/sewer capacities
- ▶ All utilities installed including gas, fiber optic, broadband & power
- ▶ BNSF/Union Pacific rail service
- ▶ Excellent soils with year-round construction capabilities & no wetlands or other constraints
- ▶ Easy I-5 & Highway 12 access
- ▶ 91 miles to Port of Portland
- ▶ 85 miles to Port of Seattle
- ▶ 78 miles to Port of Tacoma



**PORT OF
CENTRALIA**

**MASTER PLANNED
INDUSTRIAL CAMPUSES**



Economic Development



PORT OF CENTRALIA

The Port of Centralia is the premier site for industrial development in Lewis County. It is one of the fastest growing industrial centers in the south Puget Sound area.

Founded in 1986, the Port comprises two industrial parks. Parks I and II operate over 30 businesses, including Lowe's, Michaels, Sierra Pacific Industries, Lineage Logistics, Cascade Mental Health, United Natural Foods Incorporated, STIHL Northwest, and The Truss Company that provide over 2,500 jobs to the local workforce.

The Port of Centralia Commissioners strive to represent their constituents

and create jobs for their community. It has not only been the Port's goal to bring new industry to the area, but also to create industrial parks that are beneficial to the employees and citizens of Centralia while serving the needs of the business community. The Port's campuses are professionally designed and landscaped to create an attractive and relaxed environment that is compatible with its neighbors.

The Port offers industrial sites ranging from one to 100 acres with a wide variety of options including land lease, build-to-suit, and outright sales. These properties are prepared for immediate development with

all utilities currently onsite.

While both parks are less than three miles from I-5, the Port also offers unequalled rail access through Puget Sound and Pacific Railroad, Union Pacific, and Burlington Northern Santa Fe.

Businesses looking to locate here will find an ideal development partner in the Port of Centralia. The Port and the City of Centralia have created a streamlined permitting process that is one of the most competitive in Washington State.

For more information, contact the Port of Centralia at 360-736-3527 or visit portofcentralia.com.



PHOTO CREDIT
2022 - WAYNE SUTTON



The Economic Alliance of Lewis County and its partners have worked with over 100 companies that have located and expanded in our community. These firms are responsible for creating over 3,000 well-paying jobs. The Economic Alliance of Lewis County has also collaborated with 250+ local firms to

help them expand or strengthen their operations, as well as solve transportation, utility, and regulatory problems.

For more information, call 360-748-0114 or visit the Economic Alliance of Lewis County website at lewiscountyalliance.org

Working with its partners, the EALC has helped acquire over \$10 million in grant funds for public infrastructure, \$7 million in small business lending and more than \$10 million in incentive savings for industry. The EALC includes 300+ business members, including local government, education, and others. The Alliance offers programs to increase the competitiveness of local companies and provide assistance with site location and permitting issues.

Formerly Lewis Economic
Development Counsel



The Timeline

1851

Saundersville was founded after Schuyler and Elizabeth Saunders staked a 640-acre land claim of what is now downtown Chehalis.

1870

Saundersville was renamed Chehalis, a Native American word meaning "shifting and shining sand."

1875



George Washington, son of an African American slave, filed a plot establishing the town of Centerville, soon to be Centralia.

1912



Northern Pacific Railroad Depots were built in both Centralia and Chehalis.

1927



The Lewis County Courthouse was built in Chehalis at the corner of Main Street and Chehalis Avenue where it still stands today.

2009



The Chehalis Renaissance Plan was adopted by the City Council to revitalize the city. The project continues today with several successful projects completed

1845

Lewis County, named for Meriwether Lewis of the Lewis and Clark Expedition, was created. Washington would not become a state until 1889.



1872

Chehalis became the Lewis County seat after the Northern Pacific Railroad was persuaded to build through Chehalis.



1883

Chehalis was incorporated.



1886

Centralia was incorporated.



1920



Centralia became known as the Hub City because of its central location between Portland and Seattle.

1985

Twin City Commerce Established

2003

Centralia completed a 12 block downtown restoration and street-scape project.

2010

The Borst Park Complex was developed to bring visitors to the region.



2015



NW Sports Hub opens

2018

James W. Lintott Elementary School finished construction.



WF West STEM Wing Open

2020



Centralia-Chehalis Chamber office construction completes

The community joined forces to providing PPE for local First Responders in response to COVID-19



2021



Penny Playground and Recreation Park are completed Chehalis.

NW Sports Hub Expansion is complete



2014



The Gail and Carolyn Shaw Aquatic Center was opened in Chehalis.

2017



TransAlta Commons at Centralia College opens

2019

Orin C. Smith Elementary School finished construction.



Centralia High School finished construction.

Fords Prairie Elementary School finished construction.



Jefferson Lincoln Elementary School finished construction.

2022

Moving Forward Together



**LeMay Enterprises
is Proud to Serve
Lewis County!**

**Garbage / Recycling for
Home & Business**

(360)-736-4769

**MON - FRI 8am - 4:45pm
CLOSED HOLIDAYS**



1713 N Pearl, Centralia, WA 98531



The Silver Agency

MARKETING • ADVERTISING • GRAPHIC DESIGN
WEB DEVELOPMENT • VIDEO PRODUCTION
FACEBOOK & SOCIAL MEDIA ADVERTISING

122 S Market Blvd • Chehalis, WA
(360) 736-8065 • silveragency.com

RESIDENTIAL • COMMERCIAL • LAND
PROPERTY MANAGEMENT

John L. Scott®
REAL ESTATE

CELEBRATING OVER

**50
YEARS**

Find your home at **John L. Scott.com**
360-736-9939 • johnlscott@localaccess.com
900 W. Main St., Centralia, WA 98531



(360) 736-1355 • www.Live95.com

**100.5
KITI**

Classic Hits



Transportation & Libraries

Centralia and Chehalis are both accessible using two different major thoroughfares. Interstate 5 is the major north-south freeway extending from the Canadian border through Southern California. Highway 12, a primary east-west corridor across the Cascade Mountains, connects to I-5 near Chehalis and then again in Grand Mound. The cities are halfway between two large metropolitan areas, Portland and Seattle, and an hour's drive from mountains and beaches.

Timberland Regional Library

Timberland Regional Library's (TRL) 29 libraries are located in Lewis, Thurston, Grays Harbor, Pacific, and Mason counties. In Lewis County, there are libraries in Packwood, Randle, Salkum, Winlock, Chehalis and Centralia.

Here's some of the many services, programs and resources:

- » Library cards are free to residents and businesses in the 5 counties
- » Wi-Fi Access (daily 6 a.m. to midnight)
- » Computer use - walkup and online reservations available
- » Free print/scan/fax + remote printing for pick-up during library hours
- » Virtual Baby Time, Toddler, Preschool and Bilingual Storytimes plus virtual adult programs; Summer Library Program for all ages
- » Free meeting room reservations
- » Print and online collections -

ebooks, e-audio, e-magazines, streaming movies and more

- » Interactive Storytrails - combine a love of nature and a love of reading
- » Veterans Connection Café @ Mountain View (Randle) Timberland Library - benefits assistance
- » Libraries are Connection Sites in the WorkSource system
- » Go to trl.org to learn more about your library!



Amtrak Rail

Centralia Amtrak Rail Station recently celebrated its 100th anniversary. Built in 1912, it is a symbol of Centralia's economic foundation; rail transportation. The depot was recently restored by the City of Centralia in a \$4.4 million project recognized as "Outstanding Design Project" in 2003 by the Washington State Department of Community, Trade and Economic Development.

For more information, call 800-USA-RAIL.





Airport

The Chehalis-Centralia Airport (CLS) serves as a corporate and general aviation airport in Chehalis serving Southwest Washington. The 5,000' x 140' concrete runway can accommodate all aircraft up to medium-sized business jets. The airport sees approximately 48,000 annual operations and has roughly 65 aircraft based at the airport. These include personal aircraft and twin-engine corporate jets.

The airport has 24-hour fuel available as well as a

maintenance center. The airport offers a pilot's lounge with wi-fi, internet access, weather updates, restrooms, a snack bar and a courtesy car. Riverside Golf Club, an 18-hole golf course, is located within walking distance. Additionally, the airport has easy access to many restaurants and stores. CLS is a non-controlled airport and traffic advisories should be made on the Common Traffic Advisory Frequency of 122.80; AWOS weather can be obtained on 118.02 or by calling 360-740-5164.



Twin Transit

You've got places to go - and Twin Transit can help you get there!

Hop on the city bus in Centralia, Chehalis, Tumwater and Olympia. Or, call DARTT, Twin Transit's door-to-door transportation service. DARTT provides rides throughout most of Lewis County including Centralia, Chehalis, Morton, Napavine and Toledo. You can even ride DARTT all the way to Lacey and Olympia! To book your ride, call 360-330-5555. For more information on DARTT, current bus routes, and other information, visit TwinTransit.org.



Looking to expand or establish a business with I-5 exposure?

Come join us at the bustling Chehalis-Centralia Airport commerce area! With competitive leasing rates, easy access to I-5, and many convenient shopping options, you can't go wrong.

Call for more information.

360-748-1230

900 NW Airport Road
Chehalis, WA 98532





Chehalis

School Districts

The Chehalis School District's Student Achievement Initiative focuses on improving student achievement through quality instructional practices in all grades. The Chehalis School District believes that motivated students, enthusiastic instruction, and involved parents and community make a winning combination to produce well-educated citizens. By following this belief, we are accountable to each other in ensuring success for our students.

The Chehalis School District enjoys a long and distinguished history of excellence in the areas of academics, athletics, and performing arts. One high school (grades 9-12), one middle school (grades 6-8), and two elementary schools (Preschool-grade 5) serve over 2,700 students and employ just over 400 classified and certificated staff members.

Many of our students participate each year in Advanced Placement (AP) courses. Our College in the High School program provides an opportunity for students to take college classes while enrolled at W.F. West. Participating students receive full credit for high school and full credit for college in course subjects including Mathematics, English, French, and Political Science.

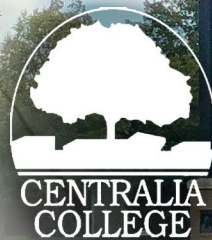
W.F. West High School has been recognized as a leader in STEM programs (Science, Technology, Engineering and Mathematics). The school was named a STEM "Lighthouse" school by the Office of the Superintendent of Public Instruction and is one of only a few high schools to have its own Scanning Electron Microscope (SEM), for scientific research. A state-of-the-art STEM wing opened at W.F. West in January 2018 thanks to the support of the Chehalis Foundation.

STEM courses are also offered at the middle school and elementary levels to help students build a strong foundation in these content areas. Robotics courses are offered at both the middle and high school levels and W.F. West's Robotics team has won many awards at the state level. For the second summer in a row, Chehalis School District has partnered with the University of Washington for a Summer STEM Camp held in the W.F. West STEM Wing for high school students throughout Southwest Washington.

A robust K-12 music program supports band and choir beginning at fifth grade. Our CMS and W.F. West bands, choirs, and orchestra achieve outstanding and superior ratings in various competitions across the state and region.

Career and Technical Education (CTE) programs offer a world of work experience in several career paths, including World Language-American Sign Language, Early Childhood Development, Culinary Arts, Botany, Biology, Animal Science, Drafting/Engineering, Woodworking, Auto, Small Engines, Welding, Sign Making, Screen Printing, Graphic Design, Photography, Annual (Yearbook), Entrepreneurship, Personal Finance, and Leadership. These classes help students explore career options and meet the people who work in these fields. Students may earn college credit through Centralia College in Welding and Early Childhood Development.

Chehalis sports teams are successful at the district and state levels and also earn WIAA Outstanding Academic Achievement Awards for excellent and superior cumulative team grade point averages.



Centralia School Districts

Centralia College has been blazing trails since 1925 with quality, affordable education for all. As a comprehensive community college, Centralia College offers a wide variety of academic and job training programs, as well as adult basic education, GEDs and high school diplomas, ESL, and personal enrichment classes.

Some of the most popular programs include nursing, criminal justice, computer science, business administration, welding, and a variety of science and technology fields.

The college also offers five bachelor's degrees in Behavioral Healthcare, Information Technology - Application Development, Diesel Technology, Applied Management (business), and Teacher Education.

Centralia College is located on a 30-acre campus in the heart of Centralia. The college's Walton Science Center is a 70,000-square-foot education center featuring outstanding science labs, classrooms, and the campus greenhouse. Completed in 2017, the TransAlta Commons building features 70,000 square feet of student space, including active learning classrooms and a 500-seat banquet and event center. Washington Hall houses two theaters, art classrooms, and music instruction and rehearsal space.

In addition to the main campus in Centralia, Centralia College East in Morton serves the needs of students in east Lewis County.

It offers a full complement of college services, from advising to testing, and boasts a vibrant student community. It's now possible for a student in east Lewis County to earn an associate degree entirely from the CC East campus.

Students can participate in a variety of athletic programs, including baseball, softball, basketball, volleyball, and women's soccer and golf. The college also fields the first collegiate eSports competitive gaming team in the state. There are dozens of student clubs and organizations, performing arts groups and fine art opportunities.

Centralia College works closely with local industries, economic development organizations, and city and county governments to provide a skilled and ready workforce for local employers. The college also provides customized training to meet the needs of incumbent workers to improve skills in specific areas.

For the community, Centralia College boasts vibrant cultural offerings, including quarterly concerts and theater productions, a robust collection of permanent art, and a full-service library.

For nearly 100 years, generations of Lewis County residents have attended Centralia College to increase their opportunities and improve their lives.

For more information on Centralia College and what it can do for you, please call 360-736-9391 or visit centralia.edu



The Centralia School District is the largest in Lewis County with approximately 550 employees serving nearly 3,400 K-12 students. Superintendent Dr. Lisa Grant is in her second year serving Centralia School District.

Centralia High School is a 2A state accredited high school. The school has undergone a complete modernization thanks to the passage of a large bond for infrastructure improvements that started in 2017. CHS' new academic wing opened at the start of the 2019-20 school year. There are 5 kindergarten through 6th grade elementary schools (Fords Prairie, Washington, Oakview, Edison, and Jefferson Lincoln), a middle school, and an alternative high school (Futurus High School), as well as CVA (Centralia Virtual Academy). Jefferson Lincoln and Fords Prairie are brand new facilities from the ground up, that opened in August 2019.

Transportation is managed via a cooperative agreement with the Chehalis School District. The transportation Co-op is a unique revenue generator for the district as it provides repair and maintenance services to many local school districts as well as emergency services departments throughout Lewis county.

Centralia's schools receive annual recognition at all grade levels. In 2017, Centralia High School was honored as a School of Distinction for sustained improvements in graduation rate over a 5-year period. Quality athletic programs produce strong competitive teams and individual athletes who regularly compete at district, state, and national levels. CHS has earned 16 WIAA Athletics Academic Championships since 2006.

Highly Capable Programs are available to students in grades 3-8, and Honors and Advanced Placement courses are offered in grades 7-12. In September 2016, the district began offering services for Special Education students through an in-house student services department headed by Tammie Jensen-Tabor. The district had previously managed special education in cooperation with the Chehalis School District via the Student Support Services Cooperative.

Centralia School District's history of academic, arts, activities, and athletic achievement is attributable to the loyal partnership between educators, parents, and the community.

Our mission: A learning community, educating each student, exceeding expectations.

Lewis County Schools Area code 360 for all

Adna School District	748-0362
Adna Elementary	748-7029
Adna Mid/High School	748-8552
Boistfort School District (K-8)	245-3343
Centralia School District	330-7600
Centralia High School	330-7605
Centralia Middle School	330-7619
Edison Elementary	330-7631
Fords Prairie Elementary	330-7633
Jefferson Lincoln Elementary	330-7636
Oakview Elementary	330-7638
Washington Elementary	330-7641
Centralia Christian School	736-7657
Chehalis School District	807-7200
W.F. West High School	807-7235
Chehalis Middle School	807-7230
James Lintott Elementary	807-7215
Orin C. Smith Elementary	807-7225
GRAVITY High School	748-4441
Evaline School District (K-8)	785-3460
Lewis County Adventist	748-3213
Morton School District	496-5300
Morton Elementary	496-5143
Morton Jr/Sr High School	496-5137
Mossyrock School District	983-3181
Mossyrock Mid/High School	983-3183
Mossyrock Elementary	983-3184
Napavine School District	262-3303
Napavine Mid/High School	262-3301
Napavine Elementary	262-3345
Onalaska School District	978-4111
Onalaska High School	978-4111
Onalaska Elem/Mid School	978-4111
Pe Ell School District	291-3244
St. Joseph's Catholic School	748-0961
Toledo School District	864-6325
Toledo High School	864-2391
Toledo Middle School	864-2395
Toledo Elementary	864-4761
White Pass School District	497-3791
White Pass Mid/High School	497-5816
White Pass Elementary	497-7300
Winlock School District	785-3582
Winlock High School	785-3537
Winlock Middle School	785-3046
Winlock Elementary	785-3516



Your Local Sports Injury Experts

- Outpatient Total Joint Replacement
- Hand Surgery
- Minimally Invasive Procedures
- Fracture & Trauma Surgery
- Foot & Ankle Surgery
- Sports Medicine
- Shoulder Surgery



Learn more at waortho.com **360-736-2889**

Picture your vision, perfected. — We see patients of all ages!

INNOVATIONS
in EyeCare

innovationsineyecare.com
(360) 736-7385 • 1125 Mellen Street, Centralia

Joseph L. Dolezal, O.D.

A sign of a good business
is a business with a
good sign.

**ESCO
pacific
SIGNS**

CALL ESCO TODAY TO SERVICE YOUR SIGN!
360.748.6461 | esco-pacific.com
627 NW Middle Street, Chehalis

Chehalis
SHEET METAL
HEATING & COOLING
ROOFING

"Dedicated to your comfort"

Heating • Cooling • Roofing
Service • Maintenance

Free Estimates
Financing OAC

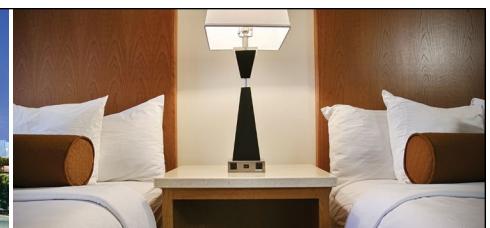


Call Us Today! **360-748-9221**

ChehalisSheetMetal.com



COMPLIMENTARY FULL HOT BREAKFAST
WITH MADE TO ORDER OMELETS
FREE WI-FI
FITNESS AND BUSINESS CENTER



MEETING ROOM
COFFEE MAKER, MINI FRIDGE AND
MICROWAVE IN EVERY ROOM
CANINE FRIENDLY

Park Place Inn & Suites 360-748-4040
201 SW Interstate Avenue, Chehalis, WA 98532 | bestwestern.com



1958 Centralia American Legion Champions
Baseball Photo Credit: The Chronicle

CENTRALIA, WASHINGTON

Discover a wealth of activities, resources and places to see whether you are visiting us for the first time or are among our returning friends. Please use the many features of the Centralia City Guide to plan your visit or to learn more about the city and its remarkable history.

Centralia, Washington was founded in 1875 by George Washington, the son of a black slave, and a jack-of-all-trades who journeyed to the Pacific Northwest to create a new life.

CHEHALIS, WASHINGTON

A community working together to maintain a high quality of life 'We are a vital and growing, historic rural community of caring, hard working, family oriented people working together for the well being of ourselves and our future generation. ' We will direct our daily activities toward realizing our vision of the future of Chehalis.

The City of Chehalis was incorporated on November 23, 1883, and operates under the laws of the State of Washington applicable to a non-charter code city with a council-manager form of government.



Middle School Fashion Jan 1994 -
Photo Credit: The Chronicle



Boy Scouts 1954 - Photo
Credit: The Chronicle



1908 Freshman Girls
Photo Credit: The Chronicle

A shared history
*One hundred and forty
Seven years in the making*

LEWIS COUNTY HISTORICAL MUSEUM

Seeing history today is important to visitors and residents of Lewis County. The Lewis County Historical Museum, housed in the 1912 depot in Chehalis, invites you to honor the people, ideas and events that laid the foundation for our lives today. It features a scale-model railroad exhibit showcasing the railroad history of Lewis County, a research library including books and records on local history with an extensive collection of photographs and newspapers, and interactive exhibits designed for the whole family!



We are a non-profit community health center offering high quality and affordable health care for the whole family.

For more information and to find a location near you, please visit our website at vvhc.org

Servicios disponible en Español

**ADULT & PEDIATRIC MEDICAL CARE • PHARMACY
ADULT & PEDIATRIC DENTAL CARE • BEHAVIORAL HEALTH**





Health, Medical, *and Wellness*

Lewis County is the home to several world-class medical facilities. Providence Centralia Hospital is the largest

health care provider in the county and part of Providence, the largest health care provider in the West. Designated as a level-three trauma center, Providence Centralia has received numerous awards. It was the recipient of the Healthgrades 2021 five-star awards for care of stroke, respiratory failure, and more. The hospital also earned the 2021 Get With The Guidelines® - Heart Failure Gold Plus Achievement Award from the American Heart Association. This award recognizes Providence Centralia Hospital's commitment and success in implementing a high standard of heart failure care by ensuring that their heart failure patients receive treatment that meets nationally accepted, evidence-based standards and recommendations. In 2018, Providence Centralia achieved Pathway to Excellence® designation by the American Nurses Credentialing Center, one of only three organizations in Washington to hold the designation, 150 in the United States and 159 worldwide.

Providence Centralia Hospital is the largest private employer in Lewis County with more than 800 employees. In recent years, Providence Centralia has added 3-D digital mammography, a 64-slice CT scanner, MRI technology, and a \$6 million, 17,000-square-foot cancer center.

There are more than 400 physicians who work in Lewis County in allergy, cardiology, diagnostic imaging, emergency medicine, family practice, gastroenterology, hospital medicine, internal medicine, obstetrics and others. Providence Medical Group outpatient clinics include: Centralia Women's Center, Chehalis Family Medicine, Centralia Family & Internal Medicine, Centralia General Surgery and Providence Regional Cancer System.

Other primary medical facilities include Chehalis Children's Clinic, Arbor Health Hospital, Northwest Pediatrics, Steck Medical Center, Valley View Medical Centers, Cascade Mental Health Center, River Valley Community Health, Pope's Kids Place and other individual physician practices. Lewis County also has a variety of chiropractors, dentists, extended-living facilities, optometrists, and podiatrists.



Geography & Climate

Lewis County is situated halfway between Seattle and Portland on Interstate 5 and covers approximately 2,452 square miles. Greater Lewis County can be accessed by highways 6 and 12 and includes many scenic locations and tourist attractions including Mount St. Helens National Volcanic Monument, Mount Rainier National Park, Gifford Pinchot National Forest, Mount Adams, Tatoosh Wilderness, Goat Rocks Wilderness, Riffe Lake, Mayfield Lake and Scanewa Lake. White Pass offers excellent skiing at 4,500 feet elevation, and ocean beaches are a one-hour drive west.

Mount St. Helens' volcanic activity has drawn high interest to Southwest Washington and is Lewis County's favorite landmark. The recovery of forested habitat and mountain ecosystem has made a remarkable comeback since the eruption of 1980. The natural geography of the mountain makes for exciting exploring and hiking.

Lewis County's natural, varied landscape ranging from rolling hills to rugged terrain to lakes, rivers, and streams makes for a beautiful landscape for river kayaking, whitewater rafting, fishing, hang gliding, mountain biking, horseback riding and off-road driving. Winter recreation is especially popular in Lewis County with hundreds of miles of trails for skiing, snowmobiling, snowshoeing or sledding. Whichever outdoor pastime you enjoy most, Lewis County is sure to give you plenty of options while taking in an incredible view of the area's nature and geography.

Lewis County has a generally moderate climate with warm, dry summers and mild winters. The average high temperature is 77°F in August and the average low temperature is 32°F in February. The area receives 54 inches of precipitation annually.





Senior Living

Lewis County has a full range of care available for senior residents.

Stillwaters Colonial Residence, Cooks Hill Manor, Sharon Care Center, Prestige Post - Acute and Rehab Center - Centralia, Village Concepts of Chehalis - Woodland Village, and Chehalis West Assisted Living all offer wellness, exercise, social and recreational programs in addition to prepared meals, housekeeping, entertainment, appointment transportation, group trips and 24-hour-a-day, on-site, licensed medical professionals.

For seniors wishing to remain in their homes, Assured Home Health, Assured Hospice, Help at Home Senior Services, and Providence Sound Home and Hospice all offer varying care assistance.

Lewis County has six senior centers that offer several programs at each location including: senior medical transportation, Meals on Wheels, senior recreation, nutrition programs and much more.

Another valuable resource in the community is the Lewis-Mason-Thurston Area Agency on Aging (LMTAAA).

LMTAAA is a governmental agency that provides free information, resources, and assistance for elderly and disabled adults. Contact LMTAAA at 360-748-2288.

Catholic Community Services provides transportation for seniors (ages 60 or better) to and from medical and health care services. Call 360-748-0161 for a ride. Service is available Monday through Friday from 8:00 a.m. to 5:00 p.m.





Top Employers

900	Providence Centralia Hospital
750	UNFI
550	Lewis County
500	Centralia School District
437	Wal*Mart
410	Chehalis School District
400	Centralia College
400	Fred Meyer Distribution Center
296	Hampton Lumber Mills
280	Michaels Distribution
278	Hardel Mutual Plywood
262	I-5 Auto Group
250	Natural Frozen Foods
241	Cardinal Glass
240	Safeway Stores
218	Valley View Health Center
216	Cascade Community Healthcare
205	Braun Northwest, Inc.
174	Alta Forest Products LLC
170	Pacific Mobile Structures
150	City of Centralia
150	Prestige Post Acute and Rehabilitation Center- Centralia
150	Sierra Pacific Industries
148	Shop'n Kart
142	Cascade Hardwoods LLC
138	Lewis County PUD
138	TransAlta
116	Lowe's Flatbed Distribution Center, #1464
105	DeGoede Bulb Farm & Gardens
100	City of Chehalis
100	Dynamic Collectors
93	Security State Bank
84	Thorbeckes Athletic Club
80	Scot Industries

IMPORTANT NUMBERS

Centralia - Chehalis	
Chamber of Commerce	360-748-8885
WorkSource Lewis County	360-748-2360
Port of Centralia	360-736-3527
Port of Chehalis	360-748-9365
Chehalis Community Renaissance Team.....	360-345-1738
Centralia Downtown Association	360-562-0194
Centralia Downtown Festivals Association	360-736-4333

UTILITIES

Centralia City Lights.....	360-330-7512
Centralia Utilities Department	360-330-7657
Chehalis City Utilities.....	360-748-6664
Lewis County PUD, Public Utility District.....	360-748-9261
Puget Sound Energy.....	888-225-5773
LeMay Enterprises	360-736-4769

CITY/COUNTY GOVERNMENT

Lewis County District Courthouse.....	360-740-1203
Lewis County Superior Court	360-740-1333
Centralia City Hall	360-330-7671
Chehalis City Hall.....	360-345-1042
Morton City Hall	360-496-6881
Mossyrock City Hall	360-983-3300
Napavine City Office	360-262-3547
Pe Ell City Clerk	360-291-3543
Toledo City Clerk	360-864-4564
Vader City Hall.....	360-295-3222
Winlock City Office	360-785-3811

POLICE & FIRE

In case of emergency call 911

Centralia Police Department	360-330-7680
Riverside Fire Authority.....	360-736-3975
Chehalis Police Department.....	360-748-8605
Chehalis Fire Department.....	360-748-3394

DEPARTMENT OF LICENSING

Lewis County Vehicle Licensing	360-740-1162
Twin City Licensing	360-748-6689
Department of Licensing, State of WA.....	360-807-6200
Timber Town Licensing - Morton	360-496-5001
South County Licensing	360-858-7367

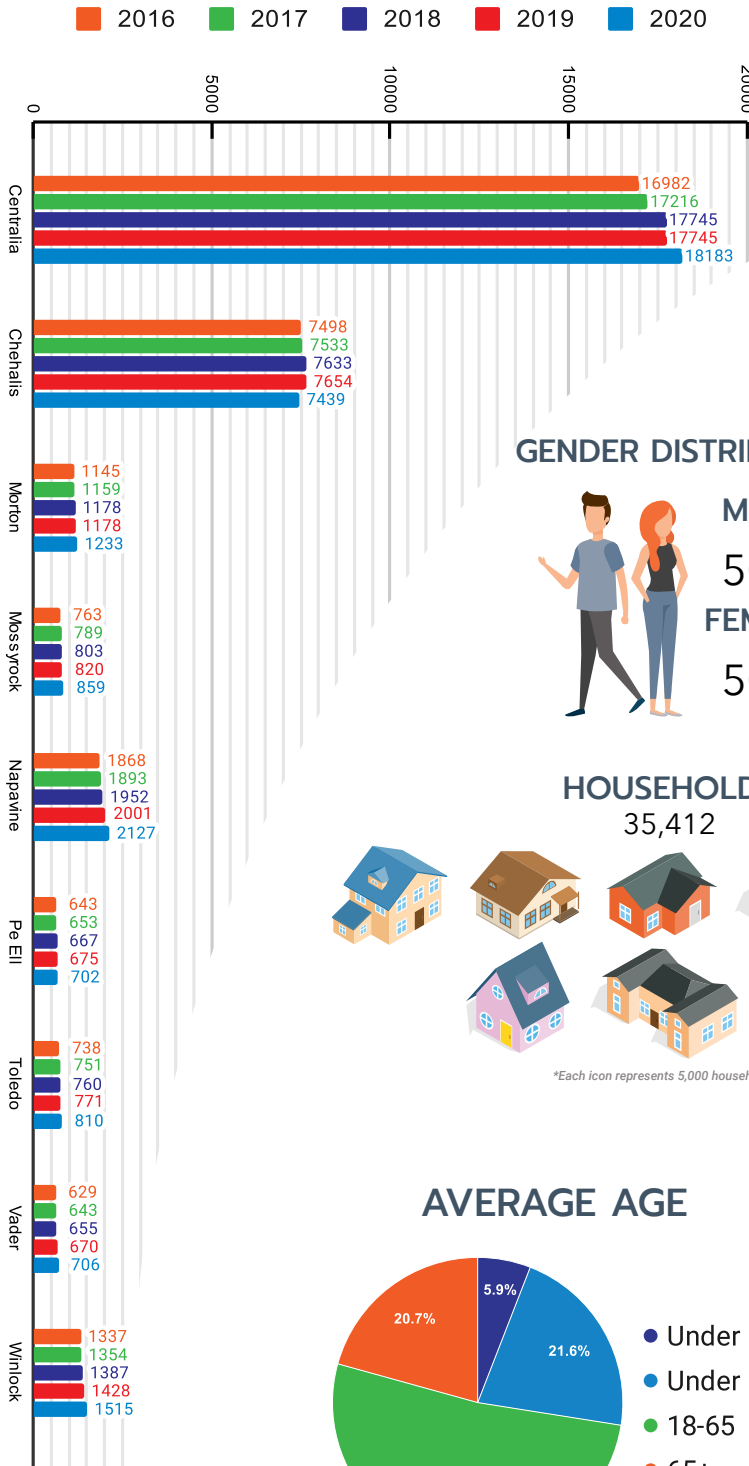
PARKS

Washington State.....	360-902-8844
Lewis County	360-740-1192
City of Centralia	360-330-7688
City of Chehalis	360-748-0271



Lewis County Population Information

POPULATION GROWTH



POPULATION STATISTICS



Incorporated
33,574
Unincorporated
48,575
Total Population
82,149

GENDER DISTRIBUTION



MALE
50%
FEMALE
50%

POPULATION DENSITY

31.4



People per square mile

HOUSEHOLDS

35,412



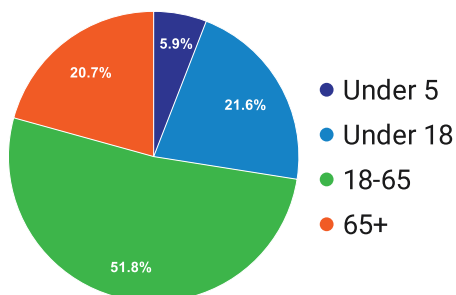
*Each icon represents 5,000 households

HOUSEHOLD SIZE

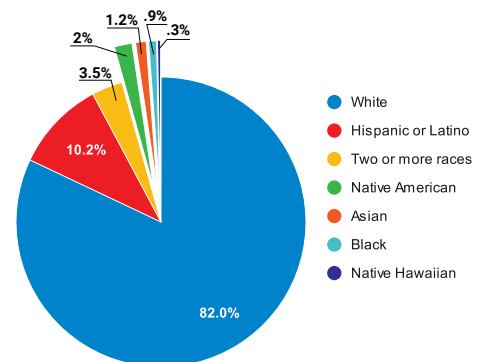
2.52



AVERAGE AGE



RACE & ETHNICITY



Become a Thorbeckes Member



- Access to all Clubs
- Group Fitness Studios
(Live and Virtual Classes)
- Cycling Studio
(Live and Virtual Classes)
- Yogo Studio
- Use of Swimming Pool
- Hydroworks Classes
- Locker Rooms & Showers
- Steam Rooms & Saunas
- Use of Track, Basketball, Racquetball, and Pickle Ball Courts

ADD ON SERVICES

- We offer Corporate Memberships -

- Family Member (\$20)
- Tanning
- Pacific Sports Spa
(Recovery and Pain Management)
- Playcenter
- Multi-use Indoor Turf Field
- Body Composition Testing
- Sports Performance Training (Tap)
- Personal Training
- Hydromassage
- Batting Cages
- Tennis
- Gymnastics
- Tae Kwan Do
- Swimming Lessons
- Pitching Machines

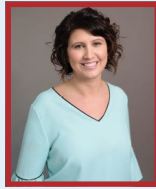
thorbeckes.com



thorbeckes ///
WELLNESS CENTER



Becky Carver
Branch Manager
NMLS: 185042
360-262-4005
bcarver@primelending.com



McKenzie Kelly
Loan Officer
NMLS: 1093037
360-262-4007
mkelly@primelending.com

470 N Market Blvd | Chehalis, WA 98532

All loans subject to credit approval. Rates and fees subject to change. ©2022 PrimeLending, a PlainsCapital Company.
(NMLS:13649) Equal Housing Lender. PrimeLending WA consumer lender lic no. CL-13649. v010918



**Your Medical
Home From
Childhood to
Young Adult**



NW PC Pediatric Center

Regular Hours: Mon. – Fri. 7am to 5pm

Kids Quick Clinic (Centralia C Clinic)

Walk-in Clinic for Urgent Care

Mon. – Fri. 12pm to 8pm | Sat. 9am to 1pm

Sun. 4pm to 8pm

Chehalis
193 S Market Blvd
360-748-3366

Centralia Clinics
A, B, & C
1911 Cooks Hill Rd
360-736-6778

Rochester
18313 Paulson St SW
360-273-1150

www.nwpeds.com

par4sports

**GOLF / MULTI SPORT
SIMULATORS**

Visit us online
to reserve your
game today!



360-429-0082 • par4sport.com

**SAFE, GATED, BEAUTIFULLY
LANDSCAPED**

50+ RETIREMENT COMMUNITY



Family-Owned and Serving the Community since 1986

360.736.4744



2800 Cooks Hill Rd, Centralia WA 98531 / www.stillwatersestates.com

Colonial Residence Assisted Living located inside Stillwaters Estates: 360.736.1551

**GET TO KNOW
EXPRESS**

We place people in Light Industrial,
Skilled Trades, Office Services and
Professional job positions.

Express knows jobs. Get to know Express.

360-330-9050
114 W Walnut Street
Centralia, WA 98531

Express
EMPLOYMENT PROFESSIONALS

www.expresspros.com/centraliawa



**Sales
Service
Parts**

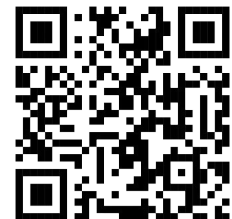
OUTDOOR POWER EQUIPMENT

**Quality Brands -
Quality Service**



Cub Cadet **eXmark**

HONDA **ECHO** **BCS**



Full Service Collection Agency

- Small Claims Judgments
- Government Accounts
- Commercial Accounts
- Medical & Dental Accounts
- Fully Automated Collection System
- Customized to fit Your Needs
- Check Recovery
- Bonded



CALL US TODAY!
360-748-0420
DynamicCollectors.com

Members of the Association of Credit & Collection Professionals
& Washington Collectors Association

3820 Harrison Avenue • Centralia, WA 98531

360-736-6340 • powershopcentralia.com

Tues - Fri 8:00 AM - 5:00 PM • Sat Hours 9:00 AM - 3:00 PM • Closed Sun & Mon

MAKE YOUR FIRST STOP, THE POWER SHOP



Chamber Sponsored 2022 Events

Monthly Events

Chamber Forum
2nd Thursday of each month
11:30 a.m. - 1:00 p.m.

Business After Hours (BAH)
3rd Thursday of each month
5:00 p.m. - 7:00 p.m.

March 18th
Annual Chamber Banquet
The Hotel Washington

June 25th
Ride the Willapa:
Chehalis to Pe Ell

July 16th-17th
**2022 Seattle to
Portland Bike Classic**

September
Membership BBQ

October 31st
Trick or Treat Transit

November 23rd
**Choose Local Black
Friday Bags Giveaway**
Centralia and Chehalis

December 4th
72nd Annual Santa Parade

Please keep in mind, dates are subject to change; and events may be added at a later date.



Business of The Year 2021:

Leco Supply Honored by Chamber for Providing PPE During Pandemic



Leco Supply, an independent Chehalis-based janitorial supply company that has been doing business in Southwest Washington for 34 years, was recognized as the Centralia-Chehalis Chamber of Commerce Business of the Year during a Friday evening banquet.

Evergreen Award

Person of the Year 2021



Jemma Borden, 33, of Centralia, was the recipient of the Evergreen Award. She's a part-time volunteer who assembles mailers and envelopes for the chamber and is the organization's all-around, right-hand woman.





We are so thankful for our chamber members and sponsors! We appreciate all that you do for the community and your continued support.

Let's work together to **Promote** your business, **Protect** the Lewis County business environment, and **Inform** the public of all the wonderful resources available in their community. Chamber events are a great way to engage with other members and the community, and familiarize them with your business's goods and services.

Thank You!
Platinum Sponsors



KMNT/KELA radio stations are Southwest Washington's home for music, talk shows, local news and weather forecasts, as well on-air contests and giveaways. They broadcast local high school football and basketball games, as well as WSU Cougar Football/Basketball and Seahawks Football.

Kmnt.com • Kelaam.com
360-736-3321



lucky eagle
CASINO & HOTEL

The Lucky Eagle Casino & Hotel located in Rochester, Washington, has everything you need to relax, indulge and if you're lucky, win! Unwind in the indoor pool, enjoy a burger or pizza from CraftHouse Wood-Fired Pizza or grab a quick bite at Cedar Cafe & Espresso. The Lucky Eagle Casino & Hotel is proudly owned and operated by the Chehalis Tribe, a vital community with rich cultural traditions that have endured for centuries.

Luckyeagle.com | 800-720-1788



I-5 CARS.COM

BE BOLD. BE KIND. BE AWESOME.™

The I-5 Auto Group is the only place to shop for your next new or pre-owned vehicle in Central Washington. They offer a huge variety of new car manufacturers including Ford, Dodge, Chrysler, Jeep, RAM, Volkswagen, Chevrolet, Buick, and Toyota, plus two locations for RV service and sales. I-5 Cars delivers top-notch service and selection, plus the most competitive pricing in the region.

i-5cars.com | 360-740-9300



BETHEL
CHURCH

Bethel Church in Chehalis, WA is a community of people changed by Jesus Christ. They welcome members in different stages of the faith journey, learning about the grace, truth, and hope that there is available in Jesus. In addition to in-person and online gatherings, Bethel Church serves the community through missions, group meetings, youth ministry, and community dinners.

Bethel-church.com • 360-748-0119



*Where Heart and History
Shape our Future*

Chehalis is conveniently located between Seattle, Portland, Pacific Coast and Cascade Mountains.

360-345-1042 • ci.chehalis.wa.us

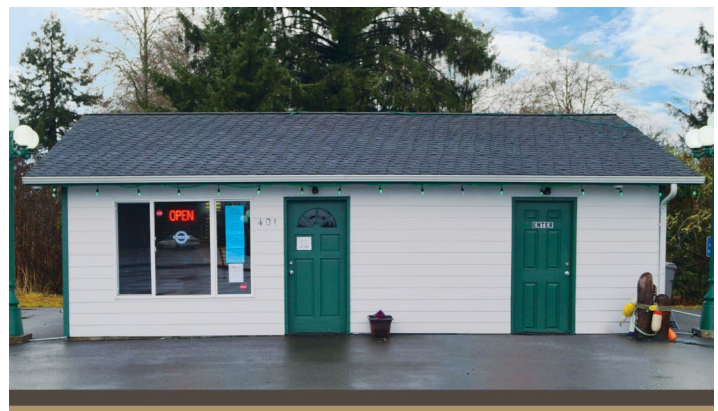


RAINIERconnect

Rainier Connect is South Puget Sound's premier phone, cable TV & high-speed Internet provider for homes and businesses.

Rainier Connect provides quality phone, DSL, cable & TV service in Tacoma, Puyallup, Centralia, Eatonville, Graham & beyond.

Rainierconnect.com • 360-623-4553



Uncle Ando's World of Weed is a 21+ recreational and medicinal cannabis dispensary with a location in Centralia, and Aberdeen. They strive to recreate the good vibes of days gone by while offering the best values on the best cannabis products.

Uncleandos.com • 360-736-0564



thorbeckes WELLNESS CENTER

**Strong Today. Stronger Tomorrow.
Strongest TOGETHER.**

Thorbeckes is more than just a gym – we're an athletic club with something to offer for everyone, at every age, at every level of fitness.

Our Mission

To offer our members an environment that supports continued health, emotional well-being, and improved quality of life.

Centralia • Chehalis • South Bend

To find out more of what Thorbeckes offers call or visit our website for additional information

Thorbeckes.com | 360-748-3744



PORT OF CENTRALIA

Celebrating over 30 years of Economic Growth

The Port of Centralia comprises three industrial parks, Park I and Park II, and Park 3, a mixed-use development. Both parks I & II adhere to the Port of Centralia's Master Plan and have multimodal transportation access. The Port offers industrial sites ranging from one to 100 acres with a wide variety of options including land lease, build-to-suit, and outright sales.

PortOfCentralia.com | 360-736-3527



STIHL®

STIHL Northwest has served the region for over 30 years, and currently supplies and distributes to 500+ authorized STIHL dealers in Washington, Oregon, Idaho, and Alaska. STIHL manufactures a wide variety of power tools and equipment including chainsaws, leafblowers, lawnmowers, and many more, and is the number one selling brand of gasoline-powered handheld outdoor power equipment among U.S. landscape professionals.

stihlusa.com • 360-748-8694



UNFI™

BETTER FOOD. BETTER FUTURE.

United Natural Foods, Inc. is a distributor of natural, organic, specialty, produce, and conventional grocery and non-food products. With over 250,000 products available, from established favorites to the latest trends, the possibilities are endless. An ever-expanding selection of 1,000 new products every month from national brands to local entrepreneurs. UNFI provides everything you need for your store, kitchen, and website.

Unfi.com | 360-330-7200



The Silver Agency

We're full-service, which means we're able to tackle everything ourselves, from high-level strategic planning to all the nitty-gritty elements of execution. Having everyone in-house is not only good for creativity and continuity—but it also enables us to move quickly. As your partner, you don't need a separate digital, branding, search, or traditional marketing agency.

SilverAgency.com | 360-736-8065



O'Blarney's Irish Pub in offers a lively fare of great food, drinks, games, and good times.

Try one of their great menus items including burgers, chicken wings, and fish and chips, and enjoy a host of fun amenities like shuffleboard and pull tabs, plus multiple screens to catch the game. In addition to on-screen sports, O'Blarney's Irish Pub is the home of several sports booster clubs, fantasy leagues, and a loyal customer base who they dearly love!

Centralia - Olympia • Oblarneypub.com • 360-807-4581



KITI
1420 AM 100.5 FM
Live 95
95.1 FM

Located in Centralia, Wash. Live 95 and KITI is Lewis County's only live and locally owned radio station.

Tune into 95.1 FM or 1420 AM 100.5 FM

Enjoy listening in your car or visit us online to listen live.

360-736-1355 • live95.com



EVMedia Outdoors joined the Centralia-Chehalis Chamber of Commerce in June of 2020.

EVMedia Outdoors specializes in digital outdoor advertising!

Kresky and National
Chehalis, WA 98532 • 360-354-4037

Thank You!

Gold Sponsors



360-736-1603
dicksbeer.com

Dick Young started NW Sausage & Deli in 1983 so everyone can enjoy Old World style smoked sausage. Home to Dick's Brewing Company! Today we keep Dick's dream alive by offering a variety of meats smoked right here in our modern electric air smokehouses.

PACIFIC MOBILE STRUCTURES

When you need mobile offices, storage containers, temporary or relocatable buildings, or modular construction services, Pacific Mobile delivers.

A customer-first commitment you won't find anywhere else makes getting the exact space you need fast and easy.

800-255-6539 PacificMobile.com



Established in 1946. They have offices in Olympia and Centralia and their 7 attorneys represent individuals and businesses throughout Washington state.

360-736-1301 • centralialaw.com



**Holiday Inn
Express
& Suites**

Guests Enjoy Free Hot Breakfast • Pool

Hotel in Chehalis, Washington. We're located off Interstate 5 and we're halfway between Seattle, WA and Portland, OR.

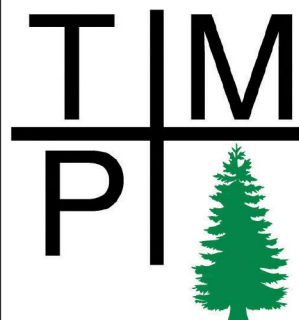
360-740-1800 • ihg.com



Providence Centralia cares for the residents of greater Lewis County and surrounding areas in Southwest Washington.

Our Mission: Providence strives to be a partner with all patients and to care for them with respect, compassion, justice, excellence, and stewardship.

360-736-2803 • providence.org



For over 40 years, Tree Management Plus has been providing efficient and affordable forestry services to the people of Southwest Washington. We cater to the needs of both private and industrial landowners. Our company was incorporated in 1979 by Tom and Sherry Fox.

360-978-4305 • treemanagementplus.com



ToledoTel is a family owned Local Exchange Carrier headquartered in Toledo, Washington, USA. ToledoTel provides facilities-based telecommunications and broadband services to Toledo and other communities in Washington State.

360-864-4552 • toledotel.com

Thank You to our Silver Sponsors



and Bronze Sponsors



50+ Senior Living & Real Estate

Stillwaters Estates Retirement Community
360-736-4744 • 360-736-4879 • Julie McQuarrie
2800 Cooks Hill Rd. Centralia WA 98531
stillwatersestates.com

Accountants & Accounting Services

Business Resource Center, Inc.
360-748-6927 • 888-972-6434 • Carol J Bezy
2710 Jackson Hwy. Chehalis WA 98532
cjbezy.com

Craig S Ruthford CPA
360-748-9226 • Craig S. Ruthford
PO Box 1385 Chehalis WA 98532

Lorri's Tax Service, Incorporated
360-807-4157 • 360-669-0638 • Lorraine Bowman
3629 Stewart Pl. Centralia WA 98531

Menichelli & Associates, PLLC
360-748-8857 • Peter Menichelli
550 N Market Blvd. PO Box 957 Chehalis WA 98532
menichelli.cpa

Ohlsson Accounting Services, LLC
360-523-9445 • Karena Ohlsson
2920 Sandra Ave. Centralia WA 98531
ohlssonaccounting.com

Brown Dog Mobile Notary
360-951-2315 • Kelley Hudson
9444 Lundeen Rd. SW Rochester WA 98579

Southwest Washington Regional Transportation Organization
360-577-3041 • 360-214-3425 • Bill Fashing
Admin Annex 207 4th Ave. N Kelso WA 98626

Survivor's Advocacy Group, Assoc.

360-269-5677 • Angie Creel
326 Dieckman Rd. Chehalis WA 98532
survivorsadvocacygroup.com

Washington Policy Center

206-937-9691 • 206-624-8038 • Dann Mead Smith
PO Box 3643 Seattle WA 98124-3643
washingtonpolicy.org

Advertising Products & Services

EV Media Outdoor
360-354-4037 • Jerry Johnson
Kresky and National Chehalis WA 98532

Rilee Jane Designs
360-269-1838 • Rilee Viggers
Chehalis WA 98532

The Silver Agency
360-736-8065 • 360-330-7960 • Chad and Coralee Taylor
122 S Market Blvd. Chehalis WA 98532
silveragency.com

Spry
360-635-8199 • Nicole Sampson
60 NW Boistfort St. Ste. #9 Chehalis WA 98532
thinkspry.com

Zip Local
801-225-0801 • Accounts Payable
1712 SE Bay Blvd. Bldg. #5 Ste. #103 Provo UT 84606
ziplocal.com

Airlines & Airports

Chehalis-Centralia Airport
360-748-1230 • 360-740-0094 • Brandon Rakes
900 NW Airport Rd. Chehalis WA 98532
ci.chehalis.wa.us/airport

Apartments And Dormitories

San Juan Arms Apartments
253-905-9246 • Jo Ann Kuehner
75 NE Cascade Ave. Apt Z or Office Chehalis WA 98532

Appliances

D.B. Cooper Appliances
360-996-4748 • Jody Turnage
1860 NE Kresky Ave. Chehalis WA 98532

Artists, Performers & Entertainers

Amazement Productions
360-412-5064 • 360-412-5064 • Jeff Evans
2423 Abernethy Rd. NE Olympia WA 98516
amazementproductions.com

ARTrails of Southwest Washington
360-736-1082 • Joanne Watson
194 Summerside Dr. Centralia WA 98531
artrailsofswwa.org

Miss Lewis County Scholarship Program
360-269-6224 • Cindy Godsey
P.O. Box 431 Centralia WA 98531
misslewiscounty.com

Assisted Living

Chehalis West Assisted Living
360-748-9911 • 360-748-4642 • Nikki Storms
478 NW Quincy Pl. Chehalis WA 98532
chehaliswest.com

Colonial Residence
360-736-1551 • 360-736-2067 • Fawn Neeley
2700 Colonial Dr. Centralia WA 98531
colonialresidence.com

**Associations, Clubs & Organizations****Better Business Bureau - BBB**

888-948-2227 • Sophia Reyes
1918 112th St. E Ste. #2 Tacoma WA 98555

Boys & Girls Club of Lewis County

360-345-1700 • Lauren Day
2071 Jackson Hwy. Chehalis WA 98532
bgcchehalis.org

Centralia Downtown Association

360-345-1040 • Teri Zambon
328 N Tower Ave. Centralia WA 98531
downtowncentralia.org

Centralia Downtown Festivals Association

360-388-1960 • Holly Phelps
211 A N Tower Ave. Centralia WA 98531

Centralia-Chehalis Chamber of Commerce

360-748-8885 • 360-748-8763
500 NW Chamber Way Chehalis WA 98532
chamberWay.com

Chehalis Community Renaissance Team

360-345-1738 • Annalee Tobey
60 NW Boistfort St. Chehalis WA 98532
experiencechehalis.com

Chehalis-Centralia Optimists

360-262-9647 • 360-262-9647 • Usha Sahadeva-
brooks
PO Box 183 Chehalis WA 98532
chehaliscentraliaoptimists.org

God's Portion

360-701-1690 • Beverly Owens
1025 F St. Centralia WA 98531
godsportion.org

Greater Lewis County Habitat for Humanity

360-736-7158 • Kenneth Johnson
PO Box 1352 Centralia WA 98531
gchabitat.org

Kiwanis Club of Centralia-Chehalis

Dick Frombgen
centraliachahaliskiwaniis.com

Lewis County Seniors

360-748-0061 • 360-740-2640 • Carol Brock
2545 N National Ave. Chehalis WA 98532
lewiscountyseniors.org

Master Gardener Foundation of Lewis County

360-740-1212 • Karen Servey
Attn: Karen Servey 17 SW Cascade Ave. Chehalis WA 98532
lewis-mg-mrc.org

Providence Southwest Washington Foundation

360-827-7940 • 360-827-7944 • Peter Brennan
1010 S Scheuber Rd. Centralia WA 98531
providence.org

**The Community Foundation
of South Puget Sound**

360-705-3340 • 360-705-2656 • Mindie Reule
212 Union Ave. SE Ste. #102 Olympia WA 98501
thecommunityfoundation.com

Twin Cities Sertoma Club

360-880-9723 • Rick Borovec
PO Box 432 Chehalis WA 98532
twincitiessertoma.org

WSU Lewis County Master Recyclers/Composter

360-740-1216 • Jason Adams
351 NW North St. Chehalis WA 98532
lewis-mg-mrc.org

Attorneys**Althausen Rayan Abbarno, LLP**

360-736-1301 • 360-736-4802 • Peter Abbarno
114 W Magnolia St. Centralia WA 98531
centralialaw.com

Hillier, Scheibmeier, Kelly & Satterfield, PS

360-748-3386 • William Hillier
299 NW Center St. Chehalis WA 98532
hsvklawfirm.com

Larry W. Fagerness, Attorney at Law

360-736-7400 • 360-330-5666 • Larry Fagerness
PO Box 88 Centralia WA 98531

Mano, Paroutaud, Groberg & Ricks

360-748-6641 • 360-748-6644 • Bart Ricks
20 SW 12th St. Chehalis WA 98532
chehalislaw.com

Phillips Burgess PLLC

360-742-3500 • Stacey Tuesta
111 21st Ave. SW Olympia WA 98501
phillipsburgesslaw.com

Auctioneers**Chehalis Livestock Market**

360-748-3191 • Brenda Balmelli
328 Hamilton Rd. N Chehalis WA 98532
clmauctions.com

Audio, Video Equipment & Services**Blue Skies Drones**

844-474-8833 • Dale Hylton
209 S Tower Ave. Centralia WA 98531
blueskiesdrone rental.com

Auto Accessories & Specialty**BFD / Black Foot Designs**

360-740-4660 • Samantha Magnuson
2635 NE Kresky Ave. Chehalis WA 98532

Lubricant Solutions LLC

253-329-0377 • Peter Christensen
1437 Lois Ln. Centralia WA 98531
lubricantsolutionsllc.com

Nomad Outfitters

360-740-4660 • Samantha Magnuson
2635 NE Kresky Ave. Chehalis WA 98532
nomadtruckandsuv.com

Auto Mechanics & Body Work**Chehalis Collision Center, Inc.**

360-996-4263 • 360-996-4595 • Jeff Burkhart
926 NW Maryland Ave. Chehalis WA 98532
chehaliscollisioncenter.com

Kresky Auto Repair & Electric

360-736-8264 • 360-330-5748 • Leon Bowman
1134 Kresky Ave. Centralia WA 98531
kreskyauto.com

McGregor Auto & Muffler

360-748-4250 • 360-345-1385 • Travis McGregor
981 NW State Ave. Chehalis WA 98532
mcgregorautoandmuffler.com

Transmissions Unlimited

360-736-2548 • 360-736-8272
1130 Kresky Ave. Centralia WA 98531
centraliatransmissions.com

Banks & Credit Unions**1st Security Bank**

360-807-0990 • 360-807-0988 • Nancy Villanueva
604 S Tower Ave. Centralia WA 98531
fsbwa.com

Columbia Bank - Chehalis

360-748-1887 • 360-740-0305 • Michael Ervin
290 NW Chehalis Ave. Chehalis WA 98532
columbiabank.com

Great NorthWest Federal Credit Union

800-533-8396 • Karla Peterson
1601 NW Louisiana Ave. Chehalis WA 98532
greatnwfcu.com

Security State Bank-Administration

360-736-0763 • 360-330-2796 • Dwayne Aberle
1930 S Gold St. Centralia WA 98531
ssbwa.com

Security State Bank-Airport Branch

360-767-6000 • 360-767-6003 • Kelly Yalch-Butler
1431 NW Louisiana Ave. Ste #301 Chehalis WA 98532
ssbwa.com

Security State Bank-Gold Street

360-736-1371 • 360-330-8437 • Wayne Merrill
1930 S Gold St. Centralia WA 98531
ssbwa.com

Security State Bank-Main Branch

360-748-3361 • 360-740-8811 • Diane Raubuch
442 NW Chehalis Ave. Chehalis WA 98532
ssbwa.com

Security State Bank-South Chehalis Branch

360-748-9279 • 360-748-4016 • Pam Simpson
1451 S Market Blvd. Chehalis WA 98532
ssbwa.com

Security State Bank-West Centralia Branch

360-736-2861 • 360-330-2792 • Michelle Land
1231 Harrison Ave. Centralia WA 98531
ssbwa.com

Timberland Bank

360-740-0770 ext 8017 • 360-740-0776 • Kami
Baine
714 W Main St. Chehalis WA 98532
timberlandbank.com

TwinStar Credit Union - Centralia

800-258-3115 • 360-736-3370 • Jon Brein
1320 S Gold St. Centralia WA 98531
twinstarcu.com

TwinStar Credit Union - Chehalis

800-258-3115 • 360-740-5305
1555 S Market Blvd. Chehalis WA 98532
twinstarcu.com

TwinStar Credit Union- in Centralia Safeway

800-258-3115 • Brandy McClure
1129 Harrison Ave. Centralia WA 98531
twinstarcu.com

TwinStar Credit Union-Onalaska

800-258-3115 • Erin McKinnell
223 2nd St W. Onalaska WA 98570
twinstarcu.com

Umpqua Bank

360-242-4040 • 503-270-2508 • Kelsie Rodriguez
401 N Market Blvd. Chehalis WA 98532
umpquabank.com

Washington Federal

360-736-7616 • 360-736-8356 • Christy Ward
110 N Pearl St. Centralia WA 98531
wafdbank.com

WSECU

800-562-0999 • 360-740-4721 • Laura Grunenfelder
2015 Kresky Ave. Chehalis WA 98532
wsecu.org

Bars, Pubs, Lounges & Taverns**O'Blarney's Irish Pub**

360-807-4581 • 360-807-4943 • Jeff Malloy
221 N Tower Ave. Centralia WA 98531
oblarneyspub.com/centralia

Sidelines Sports Bar & Grill

360-345-6648 • Audrey McKenzie
313 NW Chehalis Ave. Chehalis WA 98532

The Juice Box

360-508-3977 • Bria Perozzo
216 S Tower Centralia WA 98531



Let ToledoTel Be Your Local Voice and Data Expert
Affordable, Flexible & Convenient
Get More and Pay Less



Call for a FREE QUOTE!

- Free VoIP Telephones with All the Innovative Features
- Keep Your Current & Local Telephone Number
- System Installation with ToledoTel Experienced Professional Staff
- Unlimited Local & Long Distance Calling in US & Canada
- Lifetime Guarantee on Telephones - Never Buy Another Telephone

(360) 864-4552 | toledotel.com | 183 Plomondon Rd. | Toledo, Wa 98591

THANK YOU FOR SHOPPING LOCAL



Trusted care for our patients

When you're looking for healthcare, we know you have options. Providence Centralia Hospital and Providence specialty clinics are here for you and your family's individual needs to help you enjoy life to the fullest.

Providence Centralia Hospital earned the 2021 Get With The Guidelines® - Heart Failure Gold Plus Achievement Award from the American Heart Association. This award recognizes Providence Centralia Hospital's commitment and success in implementing a high standard of heart failure care by ensuring that their heart failure patients receive treatment that meets nationally accepted, evidence-based standards and recommendations.



To find a provider near you, visit: [providence.org](https://www.providence.org)

**Books****Book 'n Brush**

360-748-6221 • 360-748-6599 • David and Beverly Hartz
518 N Market Blvd. Chehalis WA 98532
booknbrush.com

Brick, Stone, Marble & Masonry**Lifetime Granite**

360-748-4100 • 360-748-4011 • Luke Ward
2056 Jackson Hwy. Chehalis WA 98532
lifetime-granite.com

Building Materials & Hardware**Lincoln Creek Lumber**

360-736-8261 • 360-330-0272 • Robbi Near
1621 Harrison Ave. Centralia WA 98531
lincolncreeklumber.com

Market Street ACE Hardware

360-345-1290 • 360-345-1295 • Cameron Gebhart
771 S Market Blvd. Chehalis WA 98532
marketstreetace.com

Palmer Lumber Company

360-748-8848 • 360-748-6016 • Jim Pruitt
370 NW State Ave. Chehalis WA 98532
palmerlumber.com

Buildings**Pacific Mobile Structures, Inc.**

360-748-0121 • 360-748-0578 • Garth Haakenson
1554 Bishop Rd. Chehalis WA 98532
pacificmobile.com

West Coast Mills, Inc

360-748-3351 • 360-748-6443 • Bob Thompson Sr.
887 NW State St. Chehalis WA 98532

Campgrounds & Parks**Grand Mound Mobile Home & RV Park**

253-329-0377 • Pete Christensen
21021 Old Hwy. 99 SW Ste. #16 Centralia WA 98531

Midway R.V. Park & Convenience Store

360-736-3200 • 360-736-6695 • Richard James
3200 Galvin Rd. Centralia WA 98531
midwayrvparkwa.com

Riffe Lake Campground

360-983-8122 • Ashley Lamb
241 Osborne Rd. Mossyrock WA 98564
riffelakeecampgroundwa.com

Thousand Trails Chehalis (ELS)

360-262-9489 • 360-262-0102 • Brian Smith
2228 Centralia-Alpha Rd. Chehalis WA 98532

Car Audio & Lighting**Sight and Sound Audio Connections Inc.**

360-736-0153 • 360-330-7952 • Matt Knecht
1600 S Gold St. Ste. #1 Centralia WA 98531
ssaudioconnections.com

Car Wash & Detailing**Divinity Cleaning Services, Inc**

360-748-4537 • Aaron Wires
134 Valley Meadows Loop Chehalis WA 98532-8653

Carpets & Rugs**Home Carpet Warehouse, Inc.**

360-748-1650 • 360-740-0726 • Jon Vigre
1793 NE Kresky Ave. Chehalis WA 98532
homecarpet.net

THE WENTWORTH GROUP
powered by
ACADEMY
MORTGAGE CORPORATION®

Your Hometown Home Lender - Dedicated to Service

Travis Wentworth

Branch Manager, Producing

NMLS#145360

o: 360.330.4464 c: 360.508.1360

travis.wentworth@academymortgage.com

academymortgage.com/traviswentworth

601 W Main St, Centralia, WA 98531



Certified in FHA, VA, USDA, Conventional, Manufactured Homes, Construction, Rehab, and more!

Committed to FANomenal customer service, proving second to none.

State Lic: WA MLO-145360 | WA CL-3113 | Corp NMLS#3113 | Equal Housing Lender | MAC222-1473376

The Chronicle

YOUR COMPLETE MARKETING SOLUTION

The Chronicle is your one stop shop for all of your marketing needs. We offer a comprehensive marketing approach so you can best reach your customers on both a traditional and digital level. Our sales team will help you create a custom advertising strategy so that you can reach your core audience and increase your sales. Start promoting your business today!



360-736-3311 • chronline.com • The Chronicle

**Casinos & Gambling****Lucky Eagle Casino & Hotel**

360-273-2000 • 360-273-2366 • Rodney Youckton
12888 188th Ave. SW Rochester WA 98579
luckyeagle.com

Catering**Bonanza BBQ & Catering**

360-864-2277 • Christina Gorton
121 Alder St. Toledo WA 98591
bonanzabbqcatering.com

Chehalis Deli, Inc

360-748-6021 • 360-748-1704 • Stephanie Pedersen
355 NW Chehalis Ave. Chehalis WA 98532
chehalisdeli.com

Certified Public Accountant**Landes & Co**

360-956-3355 • Craig Landes
1115 West Bay Dr. NW Ste. #302 Olympia WA 98502
landestax.com

Philip S. Garnett CPA

360-623-1375 • 360-623-1376 • Philip Garnett
322 N Tower Ave. Centralia WA 98531
philgarnettcpa.com

Chemical dependency**Eugenia Center**

360-740-9767 • 360-740-5484 • Fabiola Gonzalez
151 N Market Blvd. Chehalis WA 98532
eugeniacenter.org

Churches, Synagogues & Mosques**Bethel Church**

360-748-0119 • Debbie Scott
132 Kirkland Rd. Chehalis WA 98532
bethel-church.com

Centralia Community Church of God

360-736-7606 • 360-736-3213 • Mark Fast
3320 Borst Ave. Centralia WA 98531
cccg.com

Dayspring Baptist Church

360-748-3401 • Chris Kruger
2088 Jackson Hwy. Chehalis WA 98532
dayspringbaptistchehalis.org

Peace Evangelical Lutheran Church, U.A.C.

360-748-4108 • 360-740-4197 • Daniel Freeman
2071 Bishop Rd. Chehalis WA 98532
chehalislutheran.org

St. Timothy Episcopal Church

360-748-8232 • Kay Flores
1826 SW Snively Ave. Chehalis WA 98532
sttimothychehalis.org

Cleaners, Laundromats & Tailors**Dave's Dry Cleaners & Econo Wash**

360-736-5912 • Linda Johnson
1222 S Gold St. Centralia WA 98531
daveseconowash.com

Diverse Clean-Up Services

360-333-9885 • Joann Carpenter
12360 11th Tee Ln. Burlington WA 98233

South Market Laundry LLC

360-740-0996 • Ryan Foley
809 S Market Blvd. Chehalis WA 98532

Cleaning Supplies & Services**Bald Eagle Cleaning, LLC**

360-748-0475 • Jamie Nissel
1642 S Gold St. Centralia WA 98531
baldeaglecleaning.com

Calypso Window Washing, LLC

360-269-4947 • Cameron McGee
832 N Pearl St. Centralia WA 98531
calypsowindows.com

GT Carpet Cleaning and Residential & Commercial Services, LLP

360-749-6017 • Gregory Mitchell
1670 S Market Blvd. Ste. C Chehalis WA 98532
gtcarpet.com

Northwest Carpet Cleaning

360-748-9327 • 360-345-1369 • Rick Bayne
PO Box 15 1101 N Native Ave. Chehalis WA 98532
northwestcarpetcleaningservice.com

Squeak E Clean LLC

360-388-7567 • Marissa Gilmon
984 Centralia Alpha Rd. Chehalis WA 98432

Steam Team LLC

360-508-2649 • Bryan Erickson
1506 SW Kelly Ave. Chehalis WA 98532
steamteam.co

West End Pressure Washing

360-751-7197 • Josh Bradley
4821 Jackson Hwy. Toledo WA 98591
westendwashing.com



Cascade
Community Healthcare

Serving our Community with Acceptance, Compassion, and Respect

Cascade is a non-profit Community Healthcare Center that has been serving Lewis County and surrounding areas for more than 50 years.

Adult Services • Supported Employment
Children's Program • Substance Use Disorder
Crisis Services • Primary Care Program

We currently have five locations throughout Lewis County Washington.

Centralia 2428 West Reynolds Ave, Centralia 360-330-9044	Chehalis 135 W. Main St. Chehalis 360-748-4339	Morton 228 Main Street Morton 800-559-6696	Clubhouse 209 W Main Centralia 360-330-9044
---	---	---	--

Evaluation & Treatment Center
3510 Steelhammer Lane, Centralia
360-330-9044

CascadeCommunityHealthcare.org



Arvid's
INTERIORS
AND DESIGN

A Locally Owned Business Proudly Serving Chehalis And The Surrounding Area Since 1976.
Same great service, now under new ownership.

We Do More Than Just Flooring!

- Carpet
- Luxury Vinyl Planking
- Hardwood
- Tile
- Sheet Vinyl
- Window Treatments
- Custom Draperies
- Furniture Upholstery
- Professional Installations
- In Home Consultations & Measurements

Abbey Carpet & Floor®

360-748-6816 | chehalis.abbeycarpet.com  

**Clothing, Apparel, Shoes & Accessories****Bartels**

360-748-0277 • 360-748-0302 • Boyd Calder
486 N Market Blvd. Chehalis WA 98532
bartelsclothing.com

Gracie's

360-623-1586 • Judy DeVaul
120 A S Tower Ave. Centralia WA 98531
debbiesfashionboutique.com

Lula Roe with Rachael Atkinson

360-431-2808 • Rachael Atkinson
349 Curtis Hill Rd. Chehalis WA 98532
lularoeatkinson.com

Maurices

360-648-3231 • Hillary Moijte
1471 NW Louisiana Ave. Chehalis WA 98532

Reliable Enterprises - New Life Thrift Store

360-748-4214 • Andy Skinner
1757 N National Ave. Chehalis WA 98532
reliableenterprises.org

Rockin R Hats

360-669-0089 • Robbie Acevedo
1300 Kresky Ave. Centralia WA 98531
rockinrhats.com

Sparkles-n-Spurs Boutique

360-736-1970 • Melinda Wilkes
1210 Lum Rd. Centralia WA 98531
sparklesnspurs.com

Wilde Soul

360-523-5518 • Shelby Foister
127 Knowles Rd. Winlock WA 98596
etsy.com/shop/wildesoul

Coffee & Beverages**Courage Coffee, LLC**

360-388-6458 • 360-736-1084 • Katie Moore
PO Box 362 Centralia WA 98531
couragecoffeellc.com

Dutch Bros Coffee- Chehalis

541-955-4700
620 Arkansas Way Chehalis WA 98532
dutchbros.com

Fiddlers Coffee

360-807-4238 • Ben Hansen
1220 Mellen St. Centralia WA 98531
fiddlerscoffee.com

iBean Espresso & Mini Donuts

360-266-7566 • Gerald Waring
3307 Russell Rd. Centralia WA 98531

L & E Bottling Company

360-357-3812 • 360-357-3632 • Grant Charneski
3200 Mottman Rd. SW Tumwater WA 98512
olympiapiepsi.com

Lewis County Coffee Company

360-388-6320 • Samantha Magnuson
1349 NW State Ave. Chehalis WA 98532
lewiscountycOFFEE.com

Collections, Liens, & Foreclosure Services**Dynamic Collectors**

360-748-0420 • 360-748-4306 • Kevin Klumper
790 S Market Blvd. Chehalis WA 98532
dynamiccollectors.com

Fairway Collections, LLC

360-330-5887 • 360-330-5787 • Stephanie Lyon
1616 S Gold St. Ste. #5 Centralia WA 98531
fairwaycollects.com

Colleges, Universities & Technical Arts Education**Centralia College**

360-736-9391 • 360-330-7573 • Bob Mohrbacher
Attn: Presidents Office 600 Centralia College Blvd.
Centralia WA 98531
centralia.edu

Centralia College Foundation

360-623-8942 • Christine Fossett
401 Centralia College Blvd. Centralia WA 98531
foundation.centralia.edu

Commercial & Investment**Daryl J. Lund**

360-269-0380 • Daryl J. Lund
181 NE Summit Rd. Chehalis WA 98532

Economic Alliance of Lewis County

360-748-0114 • 360-748-1238 • Richard DeBolt
1611 N National Ave. Chehalis WA 98532
lewiscountyalliance.org

Port of Centralia

360-736-3527 • 360-330-5666 • Kyle Heaton
3508 Galvin Rd. Centralia WA 98531
portofcentralia.com

Tarragon, LLC

206-233-9600 • 206-233-0260 • Dennis Rattie
601 Union St. Ste. #3500 Seattle WA 98101
tarragon.com

The Industrial Commission

360-748-7661 • 360-748-1238
1611 N National Ave. Chehalis WA 98532

Community & Family Services**American Red Cross - Lewis County**

360-748-4607 • 360-740-0136 • Michaelle Fries
1570 N National Ave. Ste. #205 Chehalis WA 98532
redcross.org

Center for Constructive Resolution and Conversation

360-623-8061 • Janice Juntunen
500 W Main St. Ste. #11 Centralia WA 98531
cmclrc.org

Hope Alliance

360-748-6601 • 360-748-6630 • Kristine Camenzind
815 W Main St. Centralia WA 98531
hopeallianceclrc.org

Possibilities Women's Center

360-330-2229 • 360-330-2209 • Amber Freeberg
1017 W Main St. Centralia WA 98531
findmypossibilities.com

Reliable Enterprises

360-736-9558 • 360-736-1436 • Andy Skinner
203 W Reynolds Ave. Centralia WA 98531
reliableenterprises.org

United Way of Lewis County

360-748-8100 • 360-748-8222 • Christian Bruhn
450 NW Pacific Ave. Chehalis WA 98532
lewiscountyuw.com

Computer Equipment & Services**Cascade Computers**

360-266-8159 • Jeff Baird
cascadepc.com

Comp-Prime Computers

360-807-0266 • 360-807-6150 • Michelle Schonack
811 W Main St. Centralia WA 98531
compprime.com

Computer Services**The Mann Group**

360-388-1286 • David Mann
211 N Iron St. Ste. #1 Centralia WA 98531
manngroupit.com

Concrete, Cement & Paving**CalPortland**

360-736-1131 • 360-736-4449 • Dave Frentress
1419 Bishop Rd. Chehalis WA 98532
calportland.com

Lakeside Industries

360-736-2847 • 360-736-0648
2001 Johnson Rd. Centralia WA 98531
lakesideind.com

Construction Management**NW Green Construction DBA NW Green Homes**

360-740-0345 • Kara Nachatilo
261 N Hamilton Rd. Chehalis WA 98532
nwgreenhomes.net

O'Keefe Development

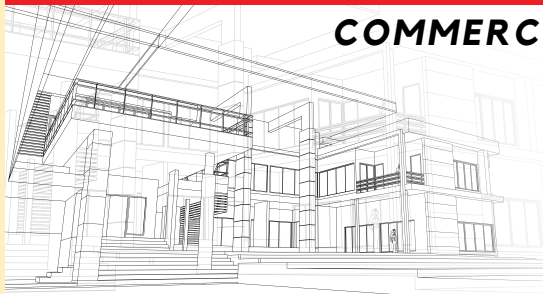
206-236-6200 • Tom T. O'Keefe
PO Box 20399 Seattle WA 98102
odc2.com

Consulting Services**Clarity Consulting**

360-870-7947 • Kelly Smith Johnston
1223 Ham Hill Rd. Centralia WA 98531
developingclarity.com

Mudge Media

360-269-1039 • Cyndi Mudge
190 Sanderson Rd. Chehalis WA 98532
mudgemediam.com

BUILDING LOCAL QUALITY SINCE 1995**COMMERCIAL & RESIDENTIAL**

360.623.1320 • mdkconstruction.com
305 East Summa Street • Centralia, WA 98531

Contractors & Consultants

Atlas Construction Advisors

509-593-3015 • Ted Lukehart
3713 Northpark Dr. Centralia WA 98531
atlasconstructionadvisors.com

Benny Sandrini Construction, Inc.

360-266-1302 • 360-262-0785 • Debbie Sandrini
PO Box 822 Chehalis WA 98532
sandriniconstruction.com

Lewis County Master Builders

360-754-0912 • 360-754-7448
1211 State Ave. NE Olympia WA 98506
omb.org

Lexar Homes

360-807-1849 • 360-807-1728 • Brian Reynolds
1213 Long Rd. Centralia WA 98531
lexarhomes.com

Local Custom House Plans

360-345-6679 • Bryan Kirner
2501 NE. Kresky Ave. Ste. C Chehalis WA 98532
localhouseplans.com

MDK Construction, Inc

360-623-1320 • 360-623-1322 • Steve Barnett
305 East Summa St. Centralia WA 98531
mdkconstruction.com

Schwiesow Construction, Inc.

360-330-2005 • 360-736-6589 • Anne Garrett
920 Fair St. Centralia WA 98531

Kugel Construction

360-740-4305 • 360-748-4272 • Adam Kugel
1722 Bishop Rd. Chehalis WA 98532
kugelconstruction.com

Dancing & DJ's

Southwest Washington Dance Center

360-748-4789 • Marcia Greenfield
437 N Market Blvd. Chehalis WA 98532
swwdance.org

Winlock Dance Center

360-523-8107 • Robin Brumley
415 NE 1s St. Winlock WA 98596
winlockdancecenter.com

Dental Care

Ash & Roberts DDS, PLLC

360-736-8380 • 360-736-2192 • Josh Prigmore
2409 Borst Ave. Centralia WA 98531
ashandroberts.com

Chehalis Dental Care- Richard C. Downing, DDS

360-748-1833 • 360-748-3807 • Reanna McNamara
68 SW 13th St. Chehalis WA 98532
chehalisdentalcare.com

Ernest M. Yamane, DDS, PS

360-748-8603 • 360-748-1614 • Lori McMahan
1292 S Market Blvd. Chehalis WA 98532
chehalisdental.com

Happy Kids Dentistry & Orthodontics

360-636-1900 • 360-636-7317 • Brittany Cole
1461 NW Louisiana Ave. Chehalis WA 98532
happykidsdentistry.com

Henricksen Family Dental

360-748-4481 • 360-740-7542 • Monica LeBaron
1292 S Market Blvd. Chehalis WA 98532
chehalisfamilydentist.com

Kerry O'Connor, DDS

360-736-1151 • 360-807-6560 • Kerry O'Connor
2401 Borst Ave. Centralia WA 98531

Richard R. Walker, DDS, PS

360-748-4481 • 360-740-7542 • Richard Walker, DDS, PS
1292 S Market Blvd. Chehalis WA 98532
chehalisdentist.com

Smile Centralia! Dental Care

360-736-5100 • Donald Lee
228 Harrison Ave. Centralia WA 98531
smilecentralia.com

Wagner Orthodontics

360-748-6636 • 360-748-3176 • Kristin Link
1292 S Market Blvd. Chehalis WA 98532
wagnerorthodontics.com

Wilson & Wilson Dentistry

360-736-1114 • 360-736-1849 • Michelle Wilson
1307 S Gold St. Centralia WA 98531
centraliadentist.com

Winlock Family Dentistry

360-785-4755 • 360-785-3336 • Brooke Clark
617 Cemetery Rd. Winlock WA 98596
winlockfamilydentistry.com

Diet, Health & Nutrition

Good Health Nutrition Center

360-736-3830 • 360-736-6303 • Julie Shaffley
503 Harrison Ave. Centralia WA 98531
goodhealthnutrition.net



Shop Local

OUTFITTERS
WORKWEAR • OUTERWEAR • BOOTS • SHOES
Chehalis, WA & Shelton, WA

Sunbird

1757 N. NATIONAL AVE. CHEHALIS | 707 CASCADE AVE. SHELTON

Distribution

Fred Meyer Retail Services, Inc.

360-740-6609 • 360-740-6659 •
222 Maurin Rd. Chehalis WA 98532
fredmeyer.com

Stihl Northwest

360-740-7611 • 360-748-1469 • Casey Kralovetz
3122 Kuper Rd. Centralia WA 98531
stihlusa.com

UNFI

360-330-7221 • Carrie Whalen
4002 Galvin Rd. Centralia WA 98531
unfi.com

Document Services

Capital Business Machines, Inc.

800-542-1666 • 360-438-0969 • Laura Stevens
PO Box 1456 Olympia WA 98507
cbm-wa.com

Education Services

Lewis County Adventist School

360-748-3213 • Karen Carlton
2102 S Scheuber Rd. Chehalis WA 98532
lcas.org

Timberland Regional Library

360-943-5001 • Chery Heywood
415 Tumwater Blvd. SW Tumwater WA 98501
trl.org

Electrical Contractors & Equipment

Dick's Electric, Inc.

360-748-0807 • Dick Watkins
135 Literal Rd. Chehalis WA 98532

Travers Electric, Inc.

360-748-0059 • 360-748-7395 • Ron Travers
122 Sturdevant Rd. Chehalis WA 98532
traverseelectric.net

Wichert Electric Inc.

360-748-6973 • 360-748-6935 • Scott Wichert
128 Sydney Ln. Chehalis WA 98532
wichertelectric.com

Emergency Services

Centralia Police Officer's Association

360-330-7680 • 360-807-6210 • Ruben Ramirez
118 W Maple St. Centralia WA 98531

Employment & Human Resource Services

American Workforce Group

360-338-6900 • Tracy Robbins
4250 Martin Way E Ste. #103 Olympia WA 98516
americanworkforcegroup.net

Ascend Staffing

360-996-4271 • 360-996-4271 • Sandra Scotton
2048 NE Kresky Ave. Chehalis WA 98532
ascendstaffing.com

Express Employment Professionals

360-330-9050 • 360-330-9060 • Eric Schubert
114 W Walnut St. Centralia WA 98531
centraliawa.expresspros.com

Lewis County Work Opportunities

360-748-9921 • 360-748-9922 • Greg Martin
122 Sears Rd. Chehalis WA 98532
lcworkop.org

Morningside

360-807-2100 • 360-807-2111 • Debbie Harders
605 W Main St. Ste. #4 Centralia WA 98531
morningsideservices.com

Total Employment and Management

360-740-8832 • 360-740-8876 • Randy Lustig
1791 NE Kresky Ave. Chehalis WA 98532
teamshome.com

Engineers

Exodus Engineering, Inc.

360-345-1566 • Luke Moerke
1321 Grand Ave. Centralia WA 98531
exodusengineering.net

Fuller Designs Inc

360-807-4420 • Cassie Fuller
1101 Kresky Ave. Centralia WA 98531
fullerdesigns.org

Gibbs and Olson, Inc.

360-425-0991 • 360-423-3162 • Rich Gushman
1157 3rd Ave. Ste #219 Longview WA 98632
gibbs-olson.com

RB Engineering

360-740-8919 • Bob Balmelli
91 SW 13th St. Chehalis WA 98532
rbengineers.com

SCJ Alliance

360-669-0700 • Nick Wheeler
212 N Tower Ave. Centralia WA 98531-4328
scjalliance.com

Entertainment

Par 4 Sports

360-429-0082 • Andrew Pullin
701 Allen Ave. Centralia WA 98531
par4sport.com



THE SAGE CLASSROOM
BECAUSE EVERY CHILD DESERVES A HEALTHY LEARNING ENVIRONMENT

FURTHER YOUR EDUCATION
ABOUT THE SAGE CLASSROOM:

Call Patrick Allen: 360.913.7214
Email: construction@pacificmobile.com
Visit: pacificmobile.com/sage-classrooms/

PACIFIC
MOBILE STRUCTURES

Blazer
CONSTRUCTION INC.

Portland State
UNIVERSITY



HONDA POWER EQUIPMENT **JOHN DEERE** **STIHL**

PAPÉ

Pape Machinery
Call Today! 360-748-9944

agriculture.papemachinery.com

127 N. Hamilton Rd. • Chehalis, WA 98532

We Have What You have Been Waiting For.

Chehalis Professional Building

Complete family dentistry provided to Lewis County for over 40 years!

1292 S Market Blvd, Chehalis

FAMILY DENTISTRY

Richard R. Walker, DDS, PS
Dan M. Henricksen, DDS, MS
360-748-4481
Ernest M. Yamane, DDS, PS
360-748-8603

ORTHODONTICS FOR CHILDREN & ADULTS

Peter L. Wagner, DMD, PLLC
Wagner Orthodontics
360-748-6636

Estate Sales

Caring Transitions

564-203-8270 • Teresa Murphy
315 S Gold St. Centralia WA 98531
caringtransitionsop.com

Events, Facilities, Conferences & Retreats

Gemini Events

916-284-2587 • Ashley Stotts
506 W Plum St. Centralia WA 98531

JH Events & Design

360-269-3906 • Jamie Holcomb
2613 Jackson Hwy. Chehalis WA 98532
jheventsanddesign.com

Meranda Events

360-669-0296 • Amanda Berg
1121 Harrison Ave. PMB #222 Centralia WA 98531

Owl & Olive - Cafe & Event Venue

360-880-0212 • Stephen Hueffed
4680 State Rte. 6 Chehalis WA 98532
owlandolive.net

Special Event Rentals -The Loft

360-304-1742 • Stephanie Cline
547 NW Pacific Ave. Chehalis WA 98532
specialeventrentals.vpweb.com

The Aerie Ballroom

360-807-1212 • 360-807-1313 • Neil White
219 S Tower Ave. Centralia WA 98531
theaerieballroom.com

Eye Care

Innovations in Eyecare, Inc.

360-736-7385 • 360-736-8568 • Joseph L. Dolezal
1125 Mellen St. Centralia WA 98531
innovationsineyecare.com

Lewis County Eye & Vision Inc.

360-748-9228 • 360-748-4617 • J.C. Stoddard
1179 S Market Blvd. Chehalis WA 98532
lewiscountyeve.com

Farming Equipment, Services, Feed & Fertilizer

The Farm Store, Inc.

360-748-3368 • 360-748-4563 • Thomas Christin
561 W Main St. Chehalis WA 98532
chehalisfarmstore.com

Tractor Supply Company

360-748-4327 • 360-748-4921 • Tammi Ferrer
1050 NW Maryland Ave. Ste B Chehalis WA 98532
tractorsupply.com

Valley Ag

360-748-9277 • 360-748-7204 • Renee Guerrero
250 NW Quincy Pl. Chehalis WA 98532
valleyag.com

Farms & Dairies

Hive 5 Bees

360-706-4978 • Kevin Mills
10020 Hwy. 12 SW Rochester WA 98579
hive5bees.com

Nordin Exposure Farm

360-748-5467 • Sherri Nordin
876 Logan Hill Rd. Chehalis WA 98532
nordinexposure.com

Fencing

Express Iron Works Inc

360-262-9999 • 360-262-9996 • Glenda Rodriguez
216 Romerman Rd. Chehalis WA 98532
expressironworks.com

Financial Industry Equipment, Supplies & Services

Cash Oasis

253-590-6613 • Deleon Brooks
4724 Stonegate St. SE Lacey WA 98503
cashoasis.net

Financial Planning & Services

ATG Bookkeeping LLC

360-388-8077 • Ashlee Gonzalez
715 H St. Centralia WA 98531
atgbookkeeping.com

Chase Bank

360-970-7513 • Stan Bowman
681 Market Blvd. Chehalis WA 98532
chase.com

Edward Jones - Derek Burger

360-736-7517 • 888-258-4519 • Rebecca Teitzel
101 N Tower Ave. Centralia WA 98531
edwardjones.com

Edward Jones - Wendy LaLone

360-736-5333 • Wendy LaLone
500 W Main St. Ste. C Centralia WA 98531
edwardjones.com

First Allied Securities, Inc.

360-736-8200 • 360-736-0964 • Barbara Greatwood
620 W Main St. Centralia WA 98531
firstalliedcentralia.com

Fox and Bull Wealth Strategies

206-910-5009 • Steve Elder
1115 Rancho Rd. Centralia WA 98531
foxandbull.com

Stottlemire Christin Investments

360-623-8979 • Kevin Stottlemire
609A W Main St. Centralia WA 98531

The Pehl Group of Raymond James

360-748-2103 • Kashif Khan
318 NW Chehalis Ave. Chehalis WA 98532
raymondjames.com/thepehlgroup

Fire & Water Damage Restoration

Heritage Restoration, Inc.

360-345-1015 • 360-345-1018 • Kevin Godfrey
1581 N National Ave. Chehalis WA 98532
firewaterstorm.com

Firearm Sales & Manufacturing

The Man Cave Outfitters

360-807-4681 • Shoni Pannkuk
207 W Main St. Centralia WA 98531
tmcoutfitters.com

Fireplaces Equipment & Supplies

Olympia Fireplace & Spa

360-740-6910 • 360-740-6912 • Sean Barnes
1508 Bishop Rd. Chehalis WA 98532
olympiafireplace.com

Food

Callisons

360-412-3399 • 360-412-3344 • Heather Alejandro
799 N National Ave. Chehalis WA 98532
callisons.com

At Your Service.

Local Voices, Local Choices • Community Ownership • Not-For-Profit Rates

Powering Lewis County for over 80 Years

Lewis

PUD
PUBLIC UTILITY DISTRICT

County



Find us on

Follow us on



Cowlitz Falls Campground

Open May to September

889 Peters Rd.
Randle, WA 98377

For reservations,
please call:

360-497-7175

Or go online at:
lcpud.org/recreation/
campground/

CHECK OUT
OUR WEBSITE!

LCPUD.ORG

CHEHALIS **360-748-9261** **800-562-5612** MORTON **360-496-6100**

Darigold Inc.

360-748-8826 • 360-748-6947 • Brent Daniels
67 SW Chehalis Ave. Chehalis WA 98532
darigold.com

Lady MacDonald's Gourmet Foods

503-791-1915 • Heidi MacDonald
366 Halliday Rd. Centralia WA 98531

National Frozen Foods

360-748-4403 • Pat Sauter
188 Sturdevant Rd. Chehalis WA 98532
nationalfrozenfoods.com

Funerals & Services

Brown Mortuary Service, Inc.

360-496-6234 • Mya Kirzy
812 Westlake Ave. Morton WA 98356
dignitymemorial.com

Fir Lawn Funeral Chapel

360-864-2101 • 360-864-4583 • Timothy Berg
351 N 5th St. Toledo WA 98591
firlawnfuneralchapel.com

Funeral Alternatives of Washington

360-807-4468 • 360-807-4591 • David McNeil
417 W Main St. Ste. C Centralia WA 98531
funeralalternatives.org

Newell-Hoerling's Mortuary

360-736-3317 • 360-736-4648 • Michelle Hayes
205 W Pine St. Centralia WA 98531
newellhoerlings.com

Sticklin Funeral Chapel

360-736-1388 • 360-330-0382 • Amanda Curry
1437 S Gold St. Centralia WA 98531
dignitymemorial.com

Furniture

Furniture World

360-748-0100 • 360-748-0101 • Terie Thomas
563 N Market Blvd. Chehalis WA 98532
furnitureworldnw.com

JJ Berry Furniture

360-345-1048 • Sherri Wade
1245 Jackson Hwy. Chehalis WA 98532
jjberryfurniture.com

JR Furniture Super Store

360-748-6888 • Paul Rai
208 Maurin Rd. Chehalis WA 98532
jrfurniture.com

Nelson Furniture Company

360-736-3832 • 360-327-1493 • Nick Nelson
1601 S Gold St. Centralia WA 98531

Games & Toys

Let's Play Something

360-669-5982 • Toni Bennett
109 N Tower Ave. Centralia WA 98531
letsplaysomething.com

Garbage, Recycling & Shredding Services

LeMay Enterprises - Lewis County & Centralia Solid Waste

360-736-4769 • 360-736-8599 • Tom Rupert
1713 N Pearl St. Centralia WA 98531
lemayinc.com

Gifts & Novelty

Gifted

360-740-5400 • Judy DeVaul
425 N Market Blvd. Chehalis WA 98532
giftedchehalis.com

Glass & Building Materials Manufacturing

Cardinal FG

360-242-4300 • 360-266-0047 • Steve Smith
545 Avery Rd. W Winlock WA 98596
cardinalcorp.com

Cardinal TG

360-242-4400 • 360-748-1408 • Tracy Stowell
214 Downie Rd. Chehalis WA 98532
cardinalcorp.com

Mohawk Industries Inc.

360-740-5720 • 706-422-3321 • Art Porter
223 Downie Rd. Chehalis WA 98532
mohawkind.com

Sierra Pacific Industries

360-736-5417 • 360-623-1141 • Lisa Perry
3115 Kuper Rd. Centralia WA 98531
spi-ind.com

Gloves

Geier Glove Co.

360-736-5883 • 360-736-0147 • Leo Fisher
810 W Main St. Centralia WA 98531
geierglove.com

Golf

Riverside Golf Club

360-748-8182 • 360-748-4699 • Sonja Sorenson
1451 NW Airport Rd. Chehalis WA 98532
playriversidegolf.com

Shankz 3D Blacklight Mini Golf

360-880-1842 • Guy Steele
2100 N National Ave. Chehalis WA 98532
shankz3dgolf.com

Government Agencies & Services

City of Centralia

360-330-7671 • 360-330-7673 • Rob Hill
118 W Maple St. Centralia WA 98531
cityofcentralia.com

City of Chehalis

360-345-1042 • 360-748-0651
350 N Market Blvd. Chehalis WA 98532
ci.chehalis.wa.us

Lewis County

360-740-1120
351 NW North St. Chehalis WA 98532
lewiscountywa.gov

Lewis County Assessor's Office

360-740-1392 • 360-740-1262 • Dianne Dorey
351 NW North St. MS:ASR01 Chehalis WA 98532
lewiscountywa.gov

Lewis County Sheriff's Office

360-748-9286 • 360-740-1476 • Robert R. Snaza
345 W Main St. Chehalis WA 98532
lewiscountywa.gov/sheriff

Lewis County Treasurer

360-740-1115 • Arny Davis
351 NW North St. MS:TRS01 Chehalis WA 98532
lewiscountywa.gov

Graphic Design

Berg Marketing Group

360-219-5215 • Amanda Berg
8540 176th Ave. SW Rochester WA 98579
bergmg.com

Evolve Prints a Division of Young Gun Northwest

360-996-4275 • Brett Daugherty
915 NW State Ave. Ste. B Chehalis WA 98532
evolve.ink

Grocery Stores

Adna Grocery

360-880-3839 • Jim Smith
109 Bunker Rd. Chehalis WA 98532
uncleJimssmokehouse.com

Grocery Outlet

360-767-0139 • Nicole Barnes
1369 NW Louisiana Ave. Chehalis WA 98532
groceryoutlet.com

Shop N' Kart Centralia Fullers

360-736-9328 • 360-330-0351 • Darris McDaniel
505 S Tower Ave. Centralia WA 98531
gosnk.com



Title Guaranty
Your locally owned Title & Escrow Company

WHETHER YOU ARE LOOKING TO:

REFINANCE • SELL • PURCHASE

PLEASE CHOOSE TITLE GUARANTY COMPANY
FOR YOUR NEXT TRANSACTION.

Title Guaranty is the only locally owned and operated Title & Escrow Company in Lewis County. We are very proud of the exceptional customer service that we give, the diligence we withstand, and we ensure our customers a smooth process through a big step in their life. In addition to these things, we pride ourselves on giving back to our community through donations, volunteerism and scholarships.

**200 NW Pacific Ave.
Chehalis, WA 98532**

**www.titlegco.com
360-748-0001**





Complimentary Express Start Breakfast • 3 Meeting Rooms for up to 100 People
Indoor Pool & Whirlpool • Professional Business Center • Guest Laundry • Fitness Center



**Holiday Inn
Express
& Suites**

730 NW Liberty Place, Chehalis, WA 98532
(360) 740-1800 • www.hiexpress.com/chehaliswa

AN IHG® HOTEL

The South Sound's *home* casino is your place for
**THE BEST REWARDS
 IN THE NORTHWEST**



**50% OFF
 FOOD**

in all of our restaurants
 when you pay the
 discounted price
 with points

**EARN
 FASTER**

Get 3 times
 points(*or more*)
 every day

Points you can use for
 food, gas, cash and more

**FREE PLAY
 = CASH**

All of our Free Play
 offers have real
 cash value



Learn about all of the program perks and a bonus offer with
 your free Lucky Star Rewards sign-up at luckyeagle.com



lucky eagle
 CASINO & HOTEL

JUST MINUTES WEST OF I-5 EXIT 88
 Rochester, WA • luckyeagle.com

COUNT ON US
**FOR THE BEST SELECTION
 OF EQUIPMENT**



View inventory, register to bid or consign
 1.360.767.3000 | rbauction.com/chehalis

rb RITCHIE BROS.
 Auctioneers®

**Health & Wellness, Sports Nutrition****Area 52**

949-981-8669 • Adam Wathen
9121 Atlanta Ave. #9262 Huntington Beach CA 92646
area52.com

Kombuchaluv

360-819-5657 • Talia Manu
1536 Grand Ave. Centralia WA 98531
kombuchaluv.com

White Tiger Acupuncture

360-868-4421 • Avishan Saberian
327 N Tower Ave. Centralia WA 98531
whitetigeracupuncture.janeapp.com

Health Care Services**Assured Hospice**

360-807-7776 • 360-807-7790
1821 Cooks Hill Rd. Ste. #201 Centralia WA 98531
lhcgroupp.com

Bloodworks NW

360-259-0583 • Jennifer McCoy
1220 Eastside St. SE Olympia WA 98501
bloodworksnw.org

Health and Hope Medical Outreach Free Clinic

360-623-1485 • Diane Paulson
1911 Cooks Hill Rd. Centralia WA 98531
hhmo.org

MultiCare

253-403-1219 • Lois Bernstein
820 A St. Tacoma WA 98402
multicare.org

Pope's Place

360-736-9178 • 360-736-8312 • Shirley Billings
230 Washington Way Centralia WA 98531
popesplace.org

River Valley Community Health

360-983-3589 • 360-925-3180 • Hugo De Oliveira
424 Williams St. Mossyrock WA 98564
rivervalleyhealth.org

Silver Acres Adult Family Home

360-996-4256 • Danae Elsner
1266 SW 22nd St. Chehalis WA 98532
silver-acres.com

Valley View Health Center

360-330-9595 • 360-330-9560
2690 NE Kresky Ave. Chehalis WA 98532
vvhc.org

Health Clubs**Embody Movement Studio & Lifestyle Boutique**

360-330-2639 • Christina Wolf
115 S Tower Ave. Centralia WA 98531
embodycentralia.com

Thorbeckes Athletic Club -Centralia

360-736-1683 • 360-736-1692 • Matt Noren
2020 Borst Ave. Unit 2 Centralia WA 98531
thorbeckes.com

Thorbeckes Athletic Club -Chehalis

360-748-3744 • 360-748-7163 • Matt Noren
91 SW Chehalis Ave. Chehalis WA 98532
thorbeckes.com

**Heating, Cooling, Ventilation
& Air Conditioning****Americool Heating and Air Conditioning**

360-273-3300 • 360-273-3337
21822 Old Hwy. 99 SW Centralia WA 98531
americoolonline.com

Chehalis Sheet Metal Heating & Cooling

360-748-9221 • 360-748-4950 • Sharon Tisler
350 SW Riverside Dr. Chehalis WA 98532
chehalissheetmetal.com

Louis Stoffer & Son Sheet Metal

360-736-3820 • 360-736-5374 • Gary Stoffer
1410 Harrison Ave. Centralia WA 98531

Mills Northwest Heating and Cooling

360-520-6284
48 SW Chehalis Ave. Chehalis WA 98532

Hospitals & Clinics**Foot & Ankle Surgical Associates Inc PS**

360-736-4151 • 360-736-4154 • Shelby Carter
1220 W 1st St. Ste. B Centralia WA 98531
fasafw.com

Providence Centralia Hospital

360-736-2803 • 360-330-8614 • Chris Thomas
914 S Scheuber Rd. Centralia WA 98531
providence.org/swsa

Hotels, Motels & Lodging**Best Western PLUS Park Place Inn & Suites**

360-748-4040 • 360-740-5323 • Tuneesha Hankins
201 SW Interstate Ave. Chehalis WA 98532
bestwestern.com

Centralia Square Grand Ballroom and Hotel

360-807-1212 • 360-807-1313 • Neil White
202 W Centralia College Blvd. Centralia WA 98531
centraliasquare.com

Holiday Inn Express & Suites

360-740-1800 • 360-740-1817 •
730 NW Liberty Pl. Chehalis WA 98532
hiexpress.com/chehaliswa

King Oscar Motel

360-736-1661 • 360-330-5522 • Sunny Atwal
1049 Eckerson Rd. Centralia WA 98531
kingoscarcentralia.com

Peppermill Empress Inn

360-330-9441 • 360-330-1467 • Derrick Taylor
1733 Alder St. Centralia WA 98531
peppermill-inn.com

Thousand Trails Paradise Resort # 5159

360-985-2121 • 360-985-2030 • Brian Smith
173 Salem Plant Rd. Silver Creek WA 98585
thousandtrails.com

Individual**Anthony E. Ketchum**

360-748-3315 • 360-748-8069 • Anthony E. Ketchum
400 SW Chehalis Ave. Chehalis WA 98532

Samantha Barnes

360-623-5915 • Samantha Barnes
1028 Chieri Ct. Chehalis WA 98532

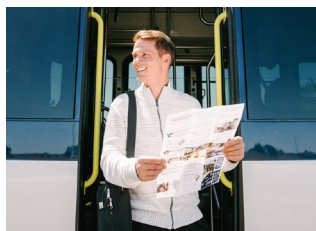
**Industrial Cleaning Equipment,
Supplies & Services****Leco Supply**

360-748-0336 • 360-740-1622 • Brian Raymor
1970 A S Market Blvd. Chehalis WA 98532
lecosupply.com

Industrial Supplies, Tools & Parts**Dobbs Peterbilt**

360-533-8990 • Trey Shelton
6130 203rd Ave. SW Centralia WA 98003
dobbspeterbilt.com

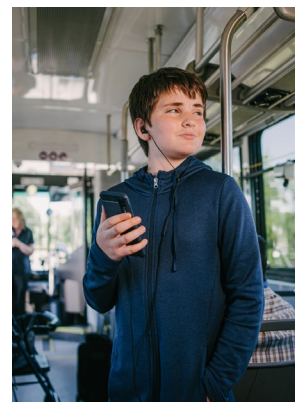
TWIN TRANSIT HELPS
YOU GET WHERE
YOU NEED TO GO



HOP ON THE
BUS IN
CENTRALIA,
CHEHALIS,
TUMWATER,
& OLYMPIA



NEED A RIDE?
CALL DARTT
360-330-5555



KIDS RIDE FREE!

TWINTRANSIT.ORG

**Truck Parts Sales Inc.**

360-748-0086 • 360-748-0088 • Aaron Prothero
269 Hamilton Rd. N Chehalis WA 98532
truckpartssalesinc.com

Inspectors & Surveyors**Foresight Surveying, Inc.**

360-748-4000 • 360-748-0873 • Ken Frazier
1583 N National Ave. Chehalis WA 98532

Schinnell Surveying & Mapping, PLLC

360-736-0394 • 360-736-3009 • Debbie Schinnell
918 Centralia College Blvd. Centralia WA 98531
surveyingandmapping.com

Top Notch Home Inspection & Home Inspector School

360-827-1436 • Robbie Smith
1639 Kresky Ave. Centralia WA 98531
topnotch-home.com

Insurance**American Family Insurance - Kevin Wasson Agency**

360-736-3181 • 360-736-5871 • Kevin Wasson
2419 Harrison Ave. Centralia WA 98531
kevinwasson.com

Chris Forespring State Farm Agency

360-330-2091 • 360-736-0750 • Chris Forespring
1616 S Gold St. Ste. #3 Centralia WA 98531
chrisforespring.com

Country Financial

360-748-4493 • 360-748-0740 • Paul Ely
19 SW 11th St. Chehalis WA 98532
countryfinancial.com

Hub Northwest - Chehalis

360-748-0051 • 360-237-0618 • Kelly Wilson
403 N Market Blvd. Chehalis WA 98532
hubnw.com

Insure with Bob, Inc.

360-736-4740 • 360-345-1138 • Bob Holland
612 W Main St. Centralia WA 98531
insurewithbob.com

Jeff Holman Insurance

360-748-0450 • 360-748-6482 • Jeff Holman
403 N Market Blvd. Chehalis WA 98532

NFP Property & Casualty Services, Inc

360-748-8855 • 360-748-7260 •
571 NW Pacific Ave. Chehalis WA 98532
aag-services.com

Nicholson & Associates Insurance

360-736-7601 • 360-623-1054 • Karen Miltenberger
118 W Pine St. Centralia WA 98531
nicholson-insurance.com

Strand Insurance of Centralia

360-736-8281 • 360-807-5913 • Jim Jansen
515 Harrison Ave. Ste. #101 Centralia WA 98531
strandinsurance.com

Interior Design**Interior Design Center**

360-748-0116 • 360-740-1854 • Rick Fisher
915 NW State Ave. Chehalis WA 98532
interiordesigncenter.co

Internet, Online & Information Providers**Althea-Centralia**

866-425-8432 • Kenneth Gal
1058 NW State Ave. Centralia WA 98531
althea-centralia.net

Lawn, Garden & Landscaping**Lawn Boys Yard Maintenance and Landscape, LLC**

360-250-9442 • Brin Hanson
8944 Old Hwy. 99 SE. Olympia WA 98501

Service Saw/Workwears Inc

360-748-8238 • 360-748-3221 • Tim Sayler
1320 NW State Ave. Chehalis WA 98532
servicesaw.com

The Power Shop

360-736-6340 • 360-736-7126 • Jarrod Oliver
3820 Harrison Ave. Centralia WA 98531
powershopcentralia.com

Loans & Mortgages**Academy Mortgage**

360-330-4464 • 888-885-6992 • Travis Wentworth
601 W Main St. Centralia WA 98531
academymortgage.com/lo/traviswentworth

Mortgage One Northwest

360-481-0205 • Brad Hargrave
1112 View Ave. Centralia WA 98531
mortgage1nw.com

Northwest Farm Credit Services

360-767-1100 • 360-767-1105 • John Linklater
629 S Market Blvd. Chehalis WA 98532
northwestfcs.com

PrimeLending

360-262-4005 • 866-479-4955 • Becky Carver
470 N Market St. Chehalis WA 98532
primelending.com

Security State Bank-Mortgage

360-807-2310 • 360-736-7058 • Richard Arthur
1231 Harrison Ave. Centralia WA 98531
ssbwa.com

Summit Funding, Inc.

360-330-4037 • 360-205-4099 • Jacek Gillispie
1616 S Gold St. Ste. #6 Centralia WA 98531
summitfunding.net/gillispie team

Locksmith**ABC Locksmith Services**

360-388-5023 • Shawna Estrada
401 S St. Centralia WA 98531

Logging & Forestry**Hemphill O'Neill Company**

360-748-6607 • 360-748-6608 • Bob O'Neill Jr.
1611 N National Ave. Chehalis WA 98532
hemphilloneill.com

O'Neill Pine Company

503-315-2400 • Richard Pine
1595 N National Ave. Chehalis WA 98532
opineco.com

Tree Management Plus, Inc.

360-978-4305 • 360-978-5747 • Thomas Fox
422 Tucker Rd. Toledo WA 98591

Weyerhaeuser Company Research Center

360-736-8241 • 360-330-1742 • Kathy Demaray
505 N Pearl St. Centralia WA 98531
weyerhaeuser.com

Machine Shops, Machining & Machinery**Cascade Trader, Inc.**

360-748-1182 • 360-748-1198 • Richard Lennox
215 Hamilton Rd. N Chehalis WA 98532
cascadetrader.net

Manufactured Homes**The Housing Mart, Inc.**

360-740-4212 • 360-740-4270 • Gary W. Stoskopf
197 Hamilton Rd. N Chehalis WA 98532
housingmart.com

Mass & Public Transportation**Twin Transit**

360-330-2072 • 360-330-2073 • Rebecca Townner
212 E Locust Centralia WA 98531
twintransit.org

Mattress & Beds**Mattress Bargain Outlet**

360-623-1091 • Alan Hurtado
1421 Harrison Ave. Centralia WA 98531
mattressbargainoutlet.com

Mental Health Services**American Behavioral Health Systems Detox Center**

360-266-5029 • Sean Ryan
505 SE Adams Ave. Chehalis WA 98532
abhsinc.net

Cascade Community Healthcare

360-330-9044 • 360-736-3139 • Richard Stride
2428 W Reynolds Ave. Centralia WA 98531
cascadecommunityhealthcare.org

Motorcycles**Powersports Northwest**

360-736-0166 • 360-736-3465 • John Hubbert
300 S Tower Ave. Centralia WA 98531
powersportsnorthwest.com

Museums, Galleries & Libraries**King Agriculture Museum**

360-701-7525 • David King
213 E Maple St. Centralia WA 98531
kingagmuseum.com

Lewis County Historical Museum

360-748-0831 • 360-740-5646 • Jason Mattson
599 NW Front Way Chehalis WA 98532
lewiscountymuseum.org

StrangeLand's Oddities, Omens & Charms

360-609-2818 • Paul Bromm
531 N Tower Ave. Centralia WA 98531

Timberland Library-Vernetta Smith, Chehalis

360-748-3301 • Lily Grant
400 N Market Blvd. Chehalis WA 98532
trl.org

Veterans Memorial Museum

360-740-8875 • 360-740-8913 • Chip Duncan
100 SW Veterans Way Chehalis WA 98532
veteransmuseum.org

New & Used Automobiles**Awesome Chevrolet Buick**

360-748-1695 • 360-740-1738 • Robert Pehl Jr.
2580 N National Ave. Chehalis WA 98532
awesomechevy.com

Awesome Ford

360-748-3355 • Robert Pehl Jr.
1001 SW Interstate Ave. Chehalis WA 98532
awesomeford.com

I-5 Chrysler Jeep Dodge Ram & Fiat

360-748-1717 • Robert Pehl Jr.
1560 NW State Ave. Chehalis WA 98532
i-5dodge.com

I-5 Toyota

360-740-9300 • 360-748-4774 • Robert Pehl Jr.
1950 NW Louisiana Ave. Chehalis WA 98532
i-5toyota.com

Volkswagen of Olympia

360-350-6262 • Robert Pehl Jr.
2107 Cooper Point Rd. SW Olympia WA 98502
volkswagenofolympia.com

Newspapers & News Services- Print & Electronic

Business to Business

360-748-3335 • 360-748-3336 • Frank DeVaul
429 N Market Blvd. Chehalis WA 98532

Coffee News

360-324-0400 • 360-357-7049 • Bill Vollmer
1673 S Market Blvd. Ste. #137 Chehalis WA 98532
coffeenewslewis.com

DeVaul Publishing, Inc.

360-748-6848 • 360-748-6841 • Frank DeVaul
429 N Market Blvd. Chehalis WA 98532
devaulpublishing.com

Flannery Publications

360-942-3466 • Pat Myers
202 NE 1st St. Winlock WA 98596
hometowndebate.com

Lewis County Guide

360-748-6848 • 360-748-6841 • Frank DeVaul
429 N Market Blvd. Chehalis WA 98532

LewisTalk.com

360-482-1671 • Jacob Luplow
122 S Market Blvd. Chehalis WA 98532
lewistalk.com

The Chronicle

360-736-3311 • 360-736-1568 • Chad & Coralee Taylor
321 N Pearl St. Centralia WA 98531
chronline.com

Non-Profit

Adaline Coffman Guild for Seattle Children's Hospital

360-520-1473 • Corenne Moses
624 NW Center St. Ste. #8 Chehalis WA 98532
adalinecoffman.org

L.C. Renal Alliance

833-527-3625 • Danielle Rovito
P.O. Box 63 Napavine WA 98565
lcrenalalliance.org

Nature Nurture Farmacy

360-996-4387 • Zoe Cockrill
176 NE School St Chehalis WA 98532
naturenurturefarmacy.org

Small Acts of Kindness

360-520-3124 • Timothy White
241 Hawkins Rd. S Winlock WA 98596
smallactsofkindness.net

Wolf Haven International

360-264-4695 • 360-264-4639 • Emily Evans
3111 Offut Lake Rd. SE Tenino WA 98589
wolfhaven.org

Office Products & Supplies

Staples

360-748-3500 • 360-748-3733 • Leah Taylor
1740 N National Ave. Chehalis WA 98532
staples.com

The Creative Office

360-754-1732 • 360-754-8774 • Lowell Gordon
721 Legion Way SE Olympia WA 98501
thecreativeoffice.com

Oil, Coal, Fuels & Natural Gas

CHS NW / Cenex

360-748-4655 • 360-748-6560 • Jesse Morgan
153 NW State Ave. Chehalis WA 98532
chsnw.com

Ferrellgas, Inc.

360-748-4802 • 360-740-7522 • Jared Guerrero
2811 Jackson Hwy. Chehalis WA 98532
ferrellgas.com

Wilson Oil Inc., DBA Wilcox & Flegel Oil Co

360-736-6164 • 360-330-2377 • Jane Bernard
204 W Reynolds Ave. Centralia WA 98531
wilcoxandflegel.com

Painting Contractors, Supplies, Wallcoverings & Siding

Sherwin-Williams

360-740-0100 • 360-740-6779 • Josh Carpenter
1565 NW Louisiana Ave. Chehalis WA 98532
sherwin-williams.com

Strong Tower Painting & Siding

360-880-3347 • Ruben Morales
760 Maryland Ave. Chehalis WA 98532
stpaintingsiding.com

Paper & Wood

Alta Forest Products, LLC

360-219-0008 • 360-736-7566 • Dave Cochenour
810 NW Liberty Pl. Chehalis WA 98532
altafp.com



Foot & Ankle
SURGICAL ASSOCIATES

Huy Dang, DPM

Centralia | Olympia | Tumwater
Lacey | Tacoma



Helping You Put Your Best Foot Forward!

- Heel Pain
- Bunions
- Ingrown Nails
- Diabetic Feet
- Pediatric Care
- Physical Therapy
- Orthotics
- Emergency Care
- MLS Laser Therapy
- Massage Therapy

On-Site State of the Art
Ambulatory Surgery Center

360.508.FEET

www.anklefoot.net

New Patients Welcome!

**Hardel Plywood**

360-740-0232 • 360-740-9619 • Emmanouel Piliaris
143 Maurin Rd. Chehalis WA 98532
hardel.com

Party Supplies & Services**Party Connexion, LLC**

360-623-1090 • 360-623-1002 • Alan Hurtado
1421 Harrison Ave. Centralia WA 98531
partyconnexion.com

Pawnbrokers & Buyers**Cash Northwest**

360-669-0214 • Brittane Kelson
1101 N Pearl St. Centralia WA 98531
cashnorthwest.org

Pet Boarding, Sitting & Training**Centralia Pet Resort, Inc.**

360-807-1364 • 360-237-0559 • Scott & Gail Heywood
515 Bryden Ave. Centralia WA 98531
centraliapetresort.com

Pharmacies**Centralia Pharmacy**

360-736-5000 • Courtney Quinby
417 S Tower Ave. Centralia WA 98531
centraliapharmacy.com

Photography**Gabriel Michael Photography**

360-736-3882 • 360-736-2457 • Gabriel Botten
462 NW Park St. Chehalis WA 98532
gabrielmichaelphotography.com

Giske Image Design

360-748-9983 • 360-748-3787 • Stan Giske
2377 Rice Rd. Chehalis WA 98532
giskeimagedesign.com

Physical Therapy**Freeborn Wellness**

360-870-2473 • 360-312-4204
515 A Harrison Ave. Centralia WA 98531
freebornwellness.com

Providence Physical Therapy

360-493-5802 • 360-493-4163 • Peter Winn
1900 Cooks Hill Rd. Centralia WA 98531
providence.org

Physicians & Surgeons (M.D. & D.O.)**Floyd Smith, M.D. Internal Medicine**

360-330-2023 • 360-669-0449 • Floyd Smith, MD
1611 Kresky Ave. Ste. #112 Centralia WA 98531
Floydsmithmd.com

Northwest Pediatric Center

360-736-6778 • 360-736-6552 • Lisa McKay
1911 Cooks Hill Rd. Centralia WA 98531
nwpeds.com

Washington Orthopaedic Center

360-736-2889 • 360-736-3136 • Tabitha Northrup
1900 Cooks Hill Rd. Centralia WA 98531
waortho.com

Pizza & Takeout**Mavericks Pizza**

360-669-5155 • Kay Merino
604 W Main St. Centralia WA 98531
maverickspizza.com

Papa Pete's Pizza

360-736-5777 • 360-577-2648 • Keli Coscia
933 Harrison Ave. Centralia WA 98531
papaletes.com

Tiki Tap House

360-669-0161 • 360-669-0161 • Cynthia Peabody
404 N Tower Ave. Centralia WA 98531
tikitaphouse.com

Plumbing, Pumping & Piping**All County Rooter**

360-807-8962 • Dallas Daarud
PO Box 1013 Centralia WA 98531
allcountyrooter.com

APD Plumbing and Mechanical, Inc.

888-4PLUMBER • Mike Walther
7616 Redstart Dr. SE Olympia WA 98513
8884PLUMBER.com

Rich's Rooter Service

360-330-2976 • John Barry
3018 Mt. Vista Rd. Centralia WA 98531
richsrooter.com

Power And Energy**Lewis County PUD #1**

360-748-9261 • 360-740-2455 • Stacy Davis
321 NW Pacific Ave. Chehalis WA 98532
lcpud.org

Tacoma Power, Cowlitz River Project

360-985-2222 • 253-502-8629 • Chad Chalmers
253 Hydro Ln. Silver Creek WA 98585
mytpu.org/tacomapower

Printing, Publishing & Copying**Advocate Printing**

360-748-3335 • 360-748-3336 • Frank DeVaul
429 N Market Blvd. Chehalis WA 98532
advocate-printing.com

Precision Printing & Copy Depot Inc

360-736-7232 • 360-736-7249 • Dorothy Due
1700 S Gold St. Centralia WA 98531
printandcopydepot.com

Property Management**Financial Products & Services, Inc.**

360-740-5220 • John Tisler
1595 N National Ave. Chehalis WA 98532
fpsinc.biz

T.J. Guyer, Inc.

360-748-4683 • 360-748-8319 • Fred Lofgren
1646 S Market Blvd. Chehalis WA 98532
tjguyer.com

Radio & Television Stations**Eli Sports Network**

360-269-4457 • Paul Beattie
814 Park Way Centralia WA 98531
yoursn.com

KACS Christian Radio Network - 90.5 FM

360-740-9436 • 360-740-9415 • Cameron Beierle
2451 NE Kresky Ave. Ste. A Chehalis WA 98532
KACS.org

KELA/ KMNT

360-736-3321 • 360-736-0150 • Lindy Waring
1635 S Gold St. Centralia WA 98531
KMNT.com

KITI Radio 100.5FM & 1420AM / Live 95 FM

360-736-1355 • 360-736-4761 • Matt Shannon
1133 Kresky Ave. Centralia WA 98531
LIVE95.com

KXXO Mixx 96.1 FM

360-943-9937 • Toni C. Holm
119 Washington St. NE Olympia WA 98501
KXXO.com

Real Estate**Adolphsen Real Estate - Martha Hunt**

360-748-9275 • 360-748-0826 • Martha Hunt
210 N Market Blvd. Chehalis WA 98532
adolphsenrealestate.com

AMSOIL- Michael Anderson

360-304-8595 • Michael Anderson
1514 Winterwood Dr. Centralia WA 98531
absolute-synthetic.com

Amy DeBolt - RE/MAX

360-269-4921 • Amy DeBolt
1015 Johnson Rd. Centralia WA 98531

Century 21 Lund Walt Cuestas

360-262-1738 • Walt Cuestas
1169 S Market Blvd. Chehalis WA 98532

Century 21 Lund, Realtors

360-748-8619 • 360-748-6417 • Robert Lund
1169 S Market Blvd. Chehalis WA 98532
century21lund.com

Chehalis Valley Realty

360-740-4222 • 360-748-3746 • Kit Miller
481 S Market Blvd. Chehalis WA 98532
chehalisvalleyrealty.com

Coldwell Banker Voetberg Real Estate, Inc

360-736-3389 • 360-330-2404 • Joe Voetberg
1209 Borthwick St. Ste. B Centralia WA 98531
cbvoetberg.com

Homefisher LLC

360-529-1313 • Sabra Fisher
1700 Winterwood Dr. Centralia WA 98531
homefisherproperties.com

John L. Scott Real Estate

360-736-9939 • 360-736-7639 • Laura Lee Zuber-
Titus
900 W Main St. Centralia WA 98531
johnlscott.com

Lewis County Title Company

360-748-8641 • 360-748-4799 • Julie Moore
625 S Market Blvd. Chehalis WA 98532
lewiscountytile.com

Northfork Realty

360-701-1652 • Ryan Deskins
19810 Old Hwy 99 SW Ste. #7 Rochester WA 98579
nfrrealty.com

Pete Bezy Realty

360-748-8800 • 888-972-5072 • Trina Homan
2710 Jackson Hwy Chehalis WA 98532
bezy.com

RE/MAX Premier Group

360-996-1010 • 360-636-7530
327 NW Park St. Chehalis WA 98532
lewiscountylistings.com

Realty One Group Pacifica

360-669-0777 • 360-368-6111 • Brad Whittaker
1616 S Gold St. Ste. #2 Chehalis WA 98531
pacificarealtyonegroup.com

Realty World Cosser & Associates

360-345-1006 • 360-345-1008 • Dave Cosser
282 SW 13th St. Chehalis WA 98532

The Benaroya Company

425-440-6700 • Lisa Goodman
3600 136th Pl. SE Ste. #250 Bellevue WA 98006
benaroya.com

Title Guaranty Co. of Lewis County

360-748-0001 • 360-748-9867 • Janelle Elliott
200 NW Pacific Ave. Chehalis WA 98532
titlegco.com

Virgil Fox

360-520-3581 • 360-748-6417 • Gary Fox
PO Box 751 Chehalis WA 98532

Recording Studios

Pleasant Hill Studios

360-748-4333 • Jeff Andersen
PO Box 287 Adna WA 98522
pleasanthillstudios.com

Recreational Centers & Activities

NW Sports Hub

360-807-4917 • Dale Pullin
701 Allen Ave. Centralia WA 98531
nwsportshub.com

Pacific Athletic Center

360-508-0557 • Garth Haakenson
2091 Jackson Hwy. Chehalis WA 98532
pacificathleticcenter.com

Rock to River Events, LLC

360-496-1903 • Hazelanna McMahan
156 Peters Rd. Randle WA 98377
summittoswamp.com

Twin Cities Sports Commission

360-443-8443 • Sandra Wing
701 Allen Ave. Centralia WA 98531
sportschapitolnorthwest.org

Recreational Vehicles, Parts & Service

Awesome RV

360-748-6658 • 360-748-8186 • Robert Pehl Jr.
1001 SW Interstate Ave. Chehalis WA 98532
awesomerv.com

Clear Creek RV

866-272-2030 • Josh Fountain
165 Hamilton Rd. Chehalis WA 98532
clearcreekrv.com

Rehabilitation

Prestige Post Acute & Rehabilitation Center - Centralia

360-736-9384 • 360-736-2844 • Toni Goins
917 S Scheuber Rd. Centralia WA 98531
prestigecare.com

Rental Stores

Chehalis Rentals

360-748-6619 • 360-748-6610 • John Whittington
388 NW Louisiana Ave. Chehalis WA 98532

Restaurants

Berry Fields Cafe & Bakery

360-736-1183 • Nicole & Shane Noel
201 S Pearl St. Centralia WA 98531
berryfieldscafe.com

Burgerville

360-736-5212 • Ashley Aulis
818 Harrison Ave. Centralia WA 98531
burgerville.com

Casa Ramos

360-330-2045 • 360-330-0222 • Victor Arceo
929 Harrison Ave. Centralia WA 98531
aztecamex.com

Country Cousin

360-736-2200 • 360-736-9872 • Kitty Bridgman
1054 Harrison Ave. Centralia WA 98531
countrycousinrestaurant.com

Dawn's Delectables Dessert & Sandwich Shoppe

360-807-4393 • Dawn Merchant
204 N Tower Ave. Centralia WA 98531
dawnsdelectables.com

Hub City Grub

360-481-6263 • Jay Ryan
701 Pioneer Way Centralia WA 98531

Jeremy's Farm to Table

360-748-4417 • Pamela Wildhaber
576 W Main St. Chehalis WA 98532
jeremysfarmtotable.com

Mackinaw's Restaurant

360-740-8000
545 N Market Blvd. Ste. #1 Chehalis WA 98532
mackinawsrestaurant.com

Market Street Bakery and Cafe

360-748-0875 • Eric Wearnier
492 N Market Blvd. Chehalis WA 98532
marketstreetbakery.com

McMenamin's Olympic Club Hotel and Theatre

360-736-5164 • 360-736-1508 • Brittany Walker
112 N Tower Ave. Centralia WA 98531
mcmenamins.com

Once Upon A Thyme

360-740-8944 • 360-996-4632 • Joy Templeton
1090 NW State Ave. Chehalis WA 98532

Quiznos Centralia #4372

360-330-5100 • 360-330-5101 • Tina & Tim Berquist
136 W High St. Centralia WA 98531
delivery.quiznos.com

Ramblin Jacks Ribeye, LLC

360-748-6066 • 360-705-0640 •
1336 Rush Rd. Napavine WA 98532
ramblinjackscribeye.com

Subway (Sub Bros Inc.)

360-736-2006 • 360-736-2006 • Chris Fast
1112 View Ave. Centralia WA 98531
subway.com

The Branch Bar & Public Room

360-669-5127 • Joel Wall
202 W Centralia College Blvd. Centralia WA 98531

The Shire Bar & Bistro

360-748-3720 • Joel Wall
465 NW Chehalis Ave. Chehalis WA 98532

Rock

McCallum Rock Drilling, Inc.

360-748-7259 • 360-748-8823 • Cameron Zuber
115 Sturdevant Rd. Chehalis WA 98532
mccallumrock.com

Roof and Floor Joists

Web Joist Northwest Corp.

360-748-1173 • 360-748-6151 • Jennifer Sweet
118 Borovec Rd. Chehalis WA 98532
webjoist.com

Roofing & Gutters

Evers Secure Roofing LLC

360-706-3040 • Amanda McSwain
18420 Old Hwy 99 SW Ste. N Rochester WA 98579
everssecureroofing.com

Genesis Roofing, LLC

360-388-1577 • Leo Martinez
1413 Harrison Ave. Centralia WA 98531
genesisroofingllc.net

Safecover Roofing, LLC

360-304-8055 • Tyler Collins
250 SW Riverside Dr. Chehalis WA 98532
safecoverroofing.com

The Roof Doctor

360-736-0246 • 360-330-2884 • Ken Slater, Jr.
1522 Bishop Rd. Chehalis WA 98532
theroofdoctor.com

Screenprinting/Embroidery

Alderson's Awards West/Printwares

360-736-2912 • 360-736-3969 • Tom Alderson
1124 Kresky Ave. Centralia WA 98531
aldersons.net

Too Dimensional Apparel, LLC

856-236-3156 • Sandra Wing
toodimensionalapparel.shop

Secondary & Elementary Schools

Centralia Christian School

360-736-7657 • 360-807-9161 • Danette Jones
1315 S Tower Ave. Centralia WA 98531
centraliachristianschool.org

Centralia School District

360-330-7600 • 360-807-2888 • Kristy Vetter
2320 Borst Ave. Centralia WA 98531
centralia.k12.wa.us

Chehalis School District

360-807-7200 • 360-748-8899 • Gayle Meister
310 SW 16th St. Chehalis WA 98532
chehalisschools.org

St. Joseph Catholic School

360-748-0961 • 360-748-8502 • Carissa Talley
123 SW 6th St. Chehalis WA 98532
stjoeschehalis.org

Senior Housing

Village Concepts of Chehalis - Woodland Village

360-748-0095 • 360-740-0760 • Destini Martinez
2100 SW Woodland Circle Chehalis WA 98532
villageconcepts/woodland-village

Vintage at Chehalis

360-740-1029 • 360-740-1087 • Denise Brooks
1590 N National Ave. Chehalis WA 98532
vintageatchehalisapts.com

Septic Design or Installation

House Brothers Construction, Inc.

360-495-4156 • Stacey House
594 W Elma Hicklin Rd. McCleary WA 98557
housebrothersconstruction.com

Service Stations

Love's Travel Stop - #454 (Carls Jr)

360-748-6597 • 360-748-6659 • Anthony Beavers
1276 Rush Rd. Chehalis WA 98532
loves.com

Sewage & Septic Systems

Rotorooter Sewer and Septic Service

360-740-1007 • Darryl Carley
623 Haywire Rd. Chehalis WA 98532
rotorooter.com

Shipping, Packaging & Postal Services

PostNet Centralia

360-807-8941 • Daniel Browning
1121 Harrison Ave. Centralia WA 98531
postnet.com

Shopping Venues

Centralia Outlets

360-736-3327 • 360-736-3328 • Melanie Wirkkala
1342 Lum Rd. Centralia WA 98531
centraliaoutlets.com

Lewis County Mall

360-740-6219 • 360-748-4978 • Joe Rosbach
177 NE Hampe Way Chehalis WA 98532

Twin City Town Center

425-453-7977 • Vivian Peterson
1501 Louisiana Ave. Chehalis WA 98532
facebook.com/twincitytowncenterschehaliswa

Visiting Nurses Foundation/ Thrift Store - Centralia

360-623-1560 • 360-623-1563 • Jackie Jewell
222 S Pearl St. Centralia WA 98531
visitingnursesfoundation.org

Visiting Nurses Thrift Store - Chehalis

360-345-1525 • Jackie Jewell
435 NW Chehalis Ave. Chehalis WA 98532
visitingnursesfoundation.org

Wal*Mart

360-748-1240 • 360-740-8270 • Kathy or Tabitha
1601 NW Louisiana Ave. Chehalis WA 98532
wal-mart.com

Signs & Banners

Esco Pacific Signs

360-748-6461 • 360-748-4299 • Francisca Taylor
627 NW Middle St. Chehalis WA 98532
esco-pacific.com

Sign Pro

360-736-6322 • Coralee Taylor
321 N Pearl St. Centralia WA 98531

Skiing & Winter Sports

White Pass Ski Area

509-672-3101 • Kathleen Goytte
48935 U.S. Hwy 12 Naches WA 98532
skiwhitepass.com

Spas & Massage

Regal Skin and Laser

360-557-3938 • Shelly Norman DNP ARNP
1958 S Market Blvd. Chehalis WA 98532
regalskinandlaser.com

Specialty Food and Beverage

Katie's Candies, Inc.

360-748-8967 • 360-740-5492 • Kathy Dillon
2022 Jackson Hwy. Chehalis WA 98532
shopkatiecandies.com

M & K Town Store

360-996-4451 • Gerald Lord
515 N Market Blvd. Chehalis WA 98532

Northwest Sausage and Deli

360-736-7760 • Julie Pendleton
5945 Prather Rd. Centralia WA 98531
dicksbeer.com

Sporting Goods

Chehalis Outfitters

360-748-3337 • 360-748-3331 • Dave Coulter
1757 N National Ave. Chehalis WA 98532
sunbirdshoppingcenter.com

Joe's Outdoor Sports Shop

360-740-6219 • 360-748-4978
177 NE Hampe Way Chehalis WA 98532
joesoutdoorsportshop.com

Taxes

Liberty Tax Service - Centralia

360-736-7787 • 360-669-0050 • Chuck McCracken
500 W Main St. Ste. A Centralia WA 98531
libertytax.com

Mountain View CPA's, PS

360-748-0217 • 360-748-6108 • Otto Rabe
308 SW 13th St. Chehalis WA 98532
mtvcpas.com

Telecommunications Equipment & Services

Comcast

800-934-6489 • Lauri Donaldson
900 132nd St. SW Everett WA 98204
comcast.com

Rainier Connect

360-623-4553 • 360-330-5102 • Amanda Singleton
1417 Kresky Ave. Ste. #1 Centralia WA 98531
rainierconnect.com

ToledoTel

360-864-4552 • 360-864-4488 • Fred Rider
183 Plomondon Rd. Toledo WA 98591
toledotel.com

Theater

Historic Fox Theatre Restorations

360-623-1103 • Scott White
123 S Tower Ave. Centralia WA 98531
centraliafoxtheatre.com

Tires

Les Schwab Tire Center - Centralia

360-736-6603 • 360-736-6691 • Mark Witham
1211 Harrison Ave. Centralia WA 98531
lesschwab.com

Les Schwab Tire Center - Chehalis

360-748-0295 • 360-748-1217 • Tony Lyon
1980 NW Louisiana Ave. Chehalis WA 98532
lesschwab.com

Tobacco/Cannabis Products

Chehalis CBD American Shaman

360-748-3515 • Shanna Hoyt-Siler
1570 N National Ave. Ste. #110 Chehalis WA 98532
nwwamericanshaman.com

Greens On Gold

360-748-0807
1039 S Gold St. Centralia WA 98531

Uncle Andos World of Weed

360-736-0564 • Frank Christin
1905 Johnson Rd. Ste. A Centralia WA 98531
uncleandos.com

Tractors

Pape Machinery

360-748-9944 • 360-748-0886 • Ryan Tornow
127 N Hamilton Rd. Chehalis WA 98532
papemachinery.com

Transportation Equipment

Braun Northwest, Inc.

360-748-0195 • 360-748-0256 • John E. Braun
150 N Star Dr. Chehalis WA 98532
braunnw.com

Trucking & Freight

Ulrich Trucking Inc.

360-748-0026 • 360-748-4308 • Albert Ulrich
120 Cabe Rd. Chehalis WA 98532

Watch This Freight LLC

360-742-3854 • Jesse McGinness
2840 Blacklake Blvd SW Ste. C Tumwater WA 98512
watchthisfreight.com

Veterinarians & Services

Cascade West Veterinary Hospital

360-736-3361 • 360-736-1085 • Chris Affeldt
1305 S Gold St. Centralia WA 98531
cascadewestvet.com

Fords Prairie Animal Clinic

360-736-0212 • 360-330-5590 • Robert Remund
2530 Harrison Ave. Centralia WA 98531
fpanimalclinic.com

Newaukum Valley Veterinary Services @ River Bend Pet Center

360-748-3121 • Brandy Fay
311 Hamilton Rd. Chehalis WA 98532
riverbendpetcenter.com



Trophies - Plaques - Namebadges
Signs - Banners - Decals
Printed & Embroidered Apparel
& More

1124 Kresky Ave., Centralia
736-2912 or 1-800-556-2912
info@aldersons.net www.aldersons.net

We're Here to Serve Your Water Needs



Moerke & Sons
PUMP AND DRILLING
SINCE 1980

Competitive Rates • Complete Water Service

Residential, Commercial, Agricultural,
Industrial, Water Delivery

Licensed, Bonded and Insured MOERKSP072N5 | MOERKSP981DA

360-748-3805 • 800-356-4404
1162 NW State Ave, Chehalis • moerkeandsons.com

Newaukum Valley Veterinary Services on State

360-748-3121 • Brandy Fay
1214 NW State Ave. Chehalis WA 98532
rbpcvet.com

Visitor Attractions & Tourist Information

Chehalis-Centralia Railroad & Museum

360-748-9593 • Mike Beehler
1101 SW Sylvanus St. Chehalis WA 98532
steamtrainride.com

Web & Graphic Design

Kodenum Inc

360-566-2636 • JT Mundi
118 US 12 Chehalis WA 98532
kodenum.com

Sea-Wing Designs

360-273-0687 • Jason Earrame
19231 Marble St. SW Rochester WA 98579
seawingedesigns.com

Wells

Moerke & Sons Pump & Drilling Inc

360-748-3805 • 360-748-8343 • Laura Moerke
Jones
1162 NW State Ave. Chehalis WA 98532
moerkeandsons.com

Wineries & Breweries

Bateaux Cellars

360-607-0774 • 360-576-0308 • Cheryl Padula
288 Smokey Valley Rd. Toledo WA 98591
bateauxcellars.com

Dick's Brewing Co.

360-736-1603 • Julie Pendleton
3516 Galvin Rd. Centralia WA 98531
dicksbeer.com

For more information
about becoming a
chamber member, please
call 360-748-8885. We
would love to share
the benefits about our
chamber memberships.

Thank You
For Another Great Year

Bob Holland Insurance

*We specialize in family and
group medical plans.*

Medical • Dental
Life • Business • Medigap
Senior Health Plans

Kaiser Permanente, United Healthcare, Aetna,
Premiera Blue Cross, Regence Blue Shield

Call Bob at 360-880-0237

insurewithbob.com • 612 W Main, Centralia



PUBLIC PLAY • RV STAYS • CASUAL DINING
PRIVATE PARTIES • GROUP & SOCIAL EVENTS

(360) 748-8182

1451 NW Airport Road, Chehalis, WA
www.PlayRiversideGolf.com



Jeff Holman Insurance, Inc.

Over 30 Years of Quality Service

- Health Coverage for Individuals & Businesses
- Competitive Life Insurance
- Disability
- Retirement Plans

360-748-0450

403 N Market Blvd • Chehalis
www.jeffholmanins.com

**CAROL J
BEZY** CPA

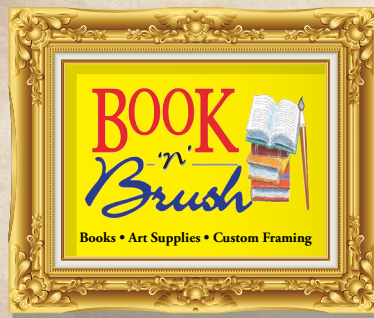


- Taxation
- Payroll Services
- Non Profit Accounting
- QuickBooks ProAdvisor Program Member
- Local Government Accounting & Reporting

BUSINESS



360-748-6927



Serving Lewis
County Since **1969**

- Books • Art Supplies
- Custom Framing • Art Classes
- Gifts • Scarves • Jewelry
- Cards • Children's Toys
- Candy • Special Orders.



Located in Historic Downtown Chehalis - Exit #77 off I-5

360-748-6221 • 518 N Market Blvd • Chehalis, WA, 98532

BookNBrush@gmail.com • www.booknbrush.com • Mon-Sat 10-6 and Sunday 11-4

Delicious Beer & Friendly Atmosphere



NORTHWEST SAUSAGE & DELI

NORTHWEST SAUSAGE & DELI

LUNCH SERVED DAILY • HANDCRAFTED SAUSAGE
HICKORY SMOKED MEATS • 13 DICK'S BEERS ON TAP
PRIME RIB SERVED FRIDAY & SATURDAY NIGHT
FAMILY FRIENDLY • GIFT BOXES

DICK'S BREWING COMPANY BEER & MERCHANDISE AVAILABLE

HOURS: **MONDAY – WEDNESDAY 9:30–5:00**
THURSDAY – SATURDAY 9:30–9:00

5945 PRATHER RD SW | CENTRALIA, WA
360.736.7760

DICK'S BREWING CO.

12 DICK'S BEERS ON TAP
6-PACKS, CASES & VARIETY PACKS
APPAREL AND MERCHANDISE AVAILABLE
MUST BE 21+

HOURS:
Friday & Saturday 3:00–7:30

3516 GALVIN RD | CENTRALIA, WA
360.736.1603

BUY & SELL LOCAL 21



CENTURY 21 Lund, Realtors

65 YEARS OF SW WASHINGTON REAL ESTATE EXPERTISE

We Close 1 Transaction



*Based on last 4 years

Zoning

Septic

Land Use

Wells

Schools

Boundary Lines

Local Knowledge



#1 Listing Office in Lewis County for 10+ Years

Award winning office Year after Year



YOUR MOST IMPORTANT INVESTMENT HANDLED WITH LOCAL EXPERTISE AND CARE.

www.Century21Lund.com

CHEHALIS OFFICE

360-748-8619 | 800-546-4609

chehalis@century21lund.com

1169 South Market Blvd. Chehalis, WA 98532

MORTON OFFICE

360-496-5900

morton@century21lund.com

250A Westlake Ave. Morton, WA 98356



©2022 Century 21 Real Estate LLC. All Rights Reserved. Century 21® is a trademark owned by CENTURY 21® Real Estate LLC. Century 21® Real Estate LLC fully supports the principles of the Fair Housing Act and the Equal Opportunities Act. Each office is independently owned and operated.